



PERSONS NOT IN THE LABOUR FORCE

AUSTRALIA

EMBARGO: 11.30AM (CANBERRA TIME) MON 21 OCT 2002

C O N T E N T S

	<i>page</i>
Notes	2
Conceptual framework	3
Summary of findings	4

TABLES

List of tables	6
Civilian population	7
Persons not in the labour force	9
Persons not in the labour force, with marginal attachment	10
Persons not in the labour force, without marginal attachment	17
Persons not in the labour force, discouraged jobseekers	20
Persons not in the labour force, for childcare reasons	21
Persons not in the labour force, last job less than 20 years ago	22
Populations	25

ADDITIONAL INFORMATION

Explanatory notes	28
Appendix 1: Populations and data items list	32
Appendix 2: Supplementary surveys	36
Technical note	37
Glossary	40

- For further information about these and related statistics, contact the National Information and Referral Service on 1300 135 070 or Annette Milnes on Canberra 02 6252 7240.

NOTES

ABOUT THIS PUBLICATION

This publication presents information about persons who are not in the labour force: that is, neither employed nor unemployed. The data measure the potential supply of labour not reflected in employment and unemployment statistics.

Many people not in the labour force could be considered to have some attachment to the labour force. They would like to work, but for a variety of reasons are not actively looking for work or are not currently available to start a job. There is an expectation that many of these people will move into the labour force in the short term, or could do so if labour market conditions changed.

The conceptual framework which follows separates persons not in the labour force into more detailed categories, depending on the strength of their attachment to the labour force.

Statistics in this publication were obtained from the Persons Not in the Labour Force Survey, conducted throughout Australia in September 2001 as a supplement to the Australian Bureau of Statistics monthly Labour Force Survey.

This survey provides information about persons aged 15–69 years who were not in the labour force. The survey collected details about whether they wanted to work, about reasons why they were not actively looking for work, about their availability for work, and about their main activity while not in the labour force.

COMPARABILITY WITH PREVIOUS YEARS' DATA

Comparability between 2001 and previous years, of estimates of persons not in the labour force who wanted to work (in particular discouraged jobseekers), may have been affected by minor changes to the questionnaire for the 2001 survey. See paragraph 18 of the Explanatory Notes for more details.

ROUNDING

As estimates have been rounded, discrepancies may occur between sums of the component items and totals.



ABBREVIATIONS

- ABS Australian Bureau of Statistics
- ASCO Australian Standard Classification of Occupations
- LFS Labour Force Survey
- RSE relative standard error
- SACC Standard Australian Classification of Countries
- SE standard error

Dennis Trewin
Australian Statistician

CONCEPTUAL FRAMEWORK

PERSONS NOT IN THE LABOUR FORCE

The civilian population can be split into two mutually exclusive groups: the labour force (employed and unemployed persons) and persons not in the labour force.

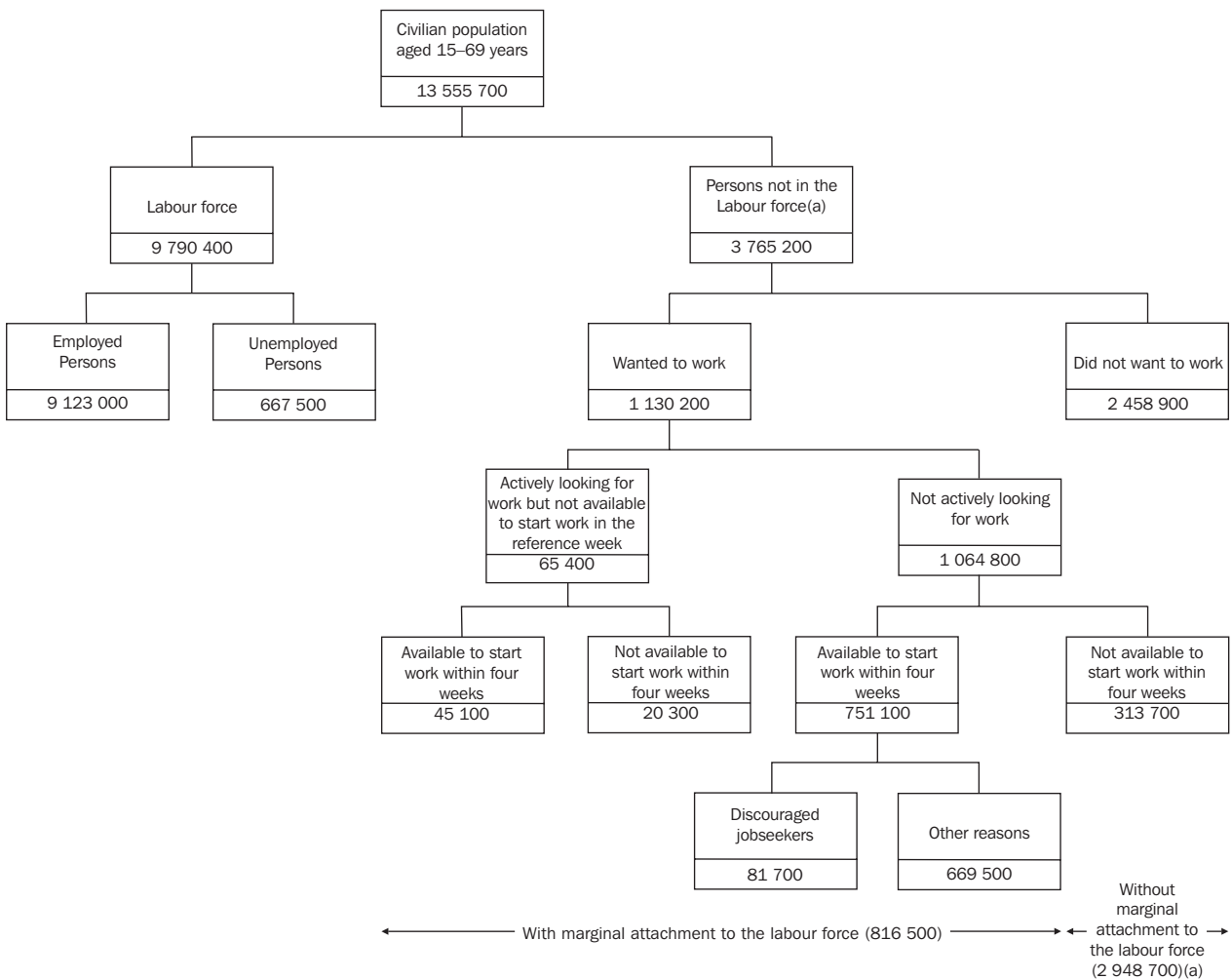
Persons not in the labour force can be split into those who are marginally attached to the labour force, and those who are not. Persons who are marginally attached may satisfy some, but not all, of the criteria required to be classified as unemployed.

Persons not in the labour force are considered to be marginally attached to the labour force if they:

- want to work and are actively looking for work but are not available to start work in the reference week; or
- want to work and are not actively looking for work but are available to start work within four weeks.

Persons not in the labour force are not marginally attached if they:

- do not want to work; or
- want to work but are not actively looking and are not available to start work within four weeks.



(a) Includes 176,100 persons who were permanently unable to work

SUMMARY OF FINDINGS

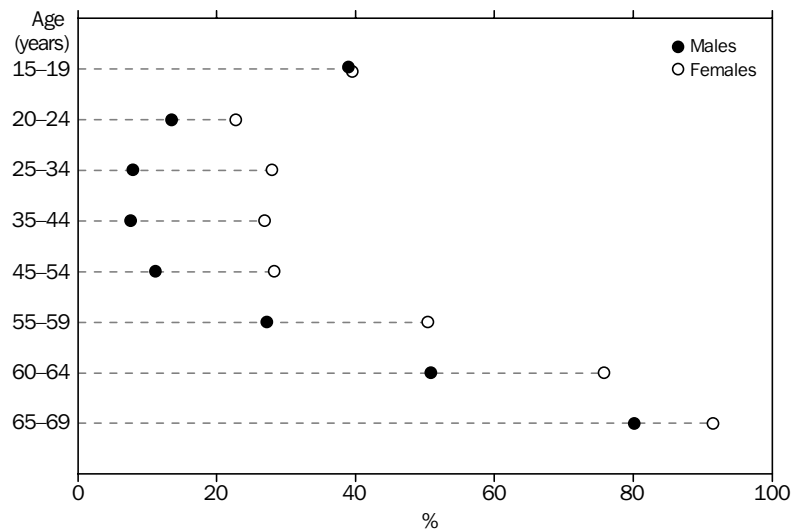
OVERVIEW

In September 2001, there were 3,765,200 persons aged 15–69 years who were not in the labour force. This represented 28% of the civilian population in this age group. Of those not in the labour force, almost two-thirds (65%) were female.

Between September 2000 and September 2001, the number of males not in the labour force rose by 43,900 (3.4%) and the number of females not in the labour force rose by 36,700 (1.5%). The net rise of 80,600 persons represents an increase of just over 2%. The number of persons with marginal attachment to the labour force decreased by just under 1% between September 2000 and September 2001, and follows on from a 7% decrease in the corresponding previous twelve month period.

The proportion of persons not in the labour force varied according to age. In the 15–19 years age group, where there are high levels of educational participation, the proportion was just under 40% for both males and females. In all other age groups, there were more females than males not in the labour force. The proportion of females not in the labour force remained steady at around 28% for those aged 25 to 54 years, before increasing sharply. For males, the proportion progressively increased after the 35–44 years range.

PERSONS NOT IN THE LABOUR FORCE, PROPORTION OF THE CIVILIAN POPULATION



MARGINAL ATTACHMENT

Of the 816,500 persons who had marginal attachment to the labour force in September 2001, 92% were not actively looking for work but were available to start work within four weeks. The remainder were actively looking for work but were not available to start work in the reference week.

Some 23% of females and 20% of males not in the labour force had a marginal attachment to the labour force. The proportion with marginal attachment decreased for females by one percentage point from September 2000 but remained steady for males.

Two-thirds (66%) of females with marginal attachment to the labour force would have preferred part-time work, while one fifth (19%) preferred full-time work. Males in this group were more evenly distributed, with 44% preferring part-time work and 41% preferring full-time work. The remainder had no preference, or were undecided.

SUMMARY OF FINDINGS *continued*

Main reason for not actively looking for work

The reasons for not actively looking for work most commonly reported by males were 'attending an educational institution' (30%) and 'own ill health or physical disability' (17%). The most commonly reported reasons for females were 'childcare' (29%) and 'attending an educational institution' (13%).

Discouraged jobseekers

At September 2001 there were 81,700 discouraged jobseekers. Sixty-five percent of these said that they intended to enter the labour force in the next 12 months. Females made up nearly two thirds of all discouraged jobseekers. Of female discouraged jobseekers who previously had a job, 42% had not had a job during the last 10 years, compared with 16% for males.

Ninety-one percent of discouraged jobseekers were aged under 65 years of age. Females made up 67% of all discouraged jobseekers under 65 years of age, with over half (54%) of these in the 35–54 age group. Of male discouraged jobseekers under 65, half (50%) were aged 55–64 years.

For all discouraged jobseekers the main reasons reported for not actively looking for work were 'considered too young or too old by employers' (38%), 'no jobs in locality or line of work' (24%) and 'lacked necessary schooling, training, skills or experience' (19%). For female discouraged jobseekers, 24% gave the reason 'lacked necessary schooling, training, skills or experience' compared to 10% of males. Thirty per cent of males gave the reason 'no jobs in locality or line or work' compared to 21% of females.

PERSONS WITHOUT MARGINAL ATTACHMENT

Of the 2,948,700 persons who were without marginal attachment to the labour force in September 2001, the majority (83%) were persons who did not want to work, while a further 6% were permanently unable to work. Of those persons who did not want to work, 37% said their main activity was 'home duties or childcare', 27% said 'retired or voluntarily inactive', and 18% said 'attending an educational institution'.

There were 313,700 persons who wanted to work but were neither actively looking for work nor available to start work within four weeks. Forty one per cent reported that their main activity was 'home duties or childcare', while 29% reported that they had a job less than 12 months ago. Of these 313,700 persons, almost two-thirds (65%) were females.

LIST OF TABLES

page

CIVILIAN POPULATION

- 1** Labour force status, September 1996 to September 2001, by sex 7

PERSONS NOT IN THE LABOUR FORCE

- 2** Main activity, by age, by sex 9

WITH MARGINAL ATTACHMENT TO THE LABOUR FORCE

- 3** Selected characteristics, by sex 10

- 4** Time and activity since last job, by sex 13

- 5** Main reason for not actively looking for work, by age and sex 15

- 6** Main reason for not actively looking for work, by sex, intention to enter the labour force in the next 12 months and preference for full-time or part-time work 16

WITHOUT MARGINAL ATTACHMENT TO THE LABOUR FORCE

- 7** Selected characteristics, by sex 17

DISCOURAGED JOBSEEKERS

- 8** Selected characteristics, by sex 20

FOR CHILDCARE REASONS

- 9** Persons who wanted to work but were not actively looking for work, by selected characteristics, by sex 21

LAST JOB LESS THAN 20 YEARS AGO

- 10** Status in employment and full-time or part-time status of last job, by reason for ceasing last job, occupation in last job and whether looked for work in the last 12 months, by sex 22

POPULATIONS

- 11** State or territory of usual residence, by sex 25

CIVILIAN POPULATION, Labour force status

	Sep 1996	Sep 1997	Sep 1998	Sep 1999	Sep 2000	Sep 2001(a)
	'000	'000	'000	'000	'000	'000
MALES						
Civilian population aged 15 to 69 years(b)	6 401.9	6 433.9	6 525.1	6 594.5	6 711.1	6 791.8
Persons in the labour force	5 199.4	5 194.7	5 295.7	5 329.0	5 424.7	5 461.5
Employed	4 736.6	4 730.3	4 854.0	4 926.7	5 054.9	5 067.7
Unemployed	462.8	464.4	441.7	402.3	369.8	393.8
Persons not in the labour force	1 202.5	1 239.2	1 229.4	1 265.5	1 286.4	1 330.3
With marginal attachment to the labour force	262.0	259.5	282.3	267.0	255.1	259.7
Wanted to work and were actively looking for work	28.6	24.4	27.8	27.8	28.6	31.3
Were available to start work within four weeks	15.8	14.6	12.6	18.3	21.6	21.5
Were not available to start work within four weeks	12.8	9.8	15.2	9.5	7.1	9.8
Wanted to work but were not actively looking for work and were available to start work within four weeks	233.3	235.1	254.5	239.1	226.4	228.4
Discouraged jobseekers	29.5	39.7	36.7	36.9	32.4	28.3
Other	203.9	195.4	217.8	202.2	194.0	200.1
Without marginal attachment to the labour force(c)	940.5	979.7	947.2	998.6	1 031.4	1 070.6
Wanted to work but were not actively looking for work and were not available to start work within four weeks	92.4	101.1	95.6	107.6	118.8	111.2
Did not want to work	784.2	819.7	789.0	838.5	837.9	843.5
FEMALES						
Civilian population aged 15 to 69 years(b)	6 382.0	6 451.1	6 499.9	6 610.7	6 687.8	6 763.9
Persons in the labour force	3 969.1	3 996.2	4 090.6	4 163.8	4 289.6	4 329.0
Employed	3 635.6	3 674.7	3 772.2	3 855.4	4 027.9	4 055.3
Unemployed	333.5	321.5	318.4	308.4	261.7	273.6
Persons not in the labour force	2 412.9	2 454.9	2 409.3	2 446.9	2 398.2	2 434.9
With marginal attachment to the labour force	617.6	630.9	640.4	616.2	568.8	556.8
Wanted to work and were actively looking for work	29.4	28.9	31.0	37.4	28.2	34.1
Were available to start work within four weeks	18.9	21.1	20.6	27.2	20.4	23.6
Were not available to start work within four weeks	10.5	7.8	10.3	10.2	7.8	10.5
Wanted to work but were not actively looking for work and were available to start work within four weeks	588.2	602.0	609.4	578.8	540.6	522.7
Discouraged jobseekers	89.4	78.7	74.3	68.9	74.1	53.3
Other	498.8	523.4	535.1	509.9	466.6	469.4
Without marginal attachment to the labour force(c)	1 795.3	1 824.0	1 769.0	1 830.7	1 829.4	1 878.1
Wanted to work but were not actively looking for work and were not available to start work within four weeks	216.0	197.6	191.5	202.2	216.6	202.5
Did not want to work	1 544.5	1 595.6	1 548.7	1 595.2	1 570.6	1 615.5

(a) Comparability between 2001 and previous years, of estimates of persons not in the labour force who wanted to work (in particular discouraged jobseekers), may have been affected by minor changes to the questionnaire for the 2001 survey. See paragraph 18 of the Explanatory Notes for more details.

(b) Civilian population estimates for 1996, 1997, 1998, 1999 were revised in the 2000 publication. See paragraph 14 of the Explanatory Notes.

(c) Includes persons who were permanently unable to work.

	Sep 1996	Sep 1997	Sep 1998	Sep 1999	Sep 2000	Sep 2001(a)
	'000	'000	'000	'000	'000	'000
PERSONS						
Civilian population aged 15 to 69 years(b)	12 783.9	12 885.1	13 025.1	13 205.1	13 398.8	13 555.7
Persons in the labour force	9 168.5	9 190.9	9 386.3	9 492.7	9 714.2	9 790.4
Employed	8 372.2	8 405.0	8 626.2	8 782.0	9 082.8	9 123.0
Unemployed	796.3	785.9	760.1	710.7	631.4	667.5
Persons not in the labour force	3 615.4	3 694.2	3 638.8	3 712.4	3 684.6	3 765.2
With marginal attachment to the labour force	879.6	890.5	922.6	883.2	823.9	816.5
Wanted to work and were actively looking for work	58.0	53.3	58.7	65.2	56.8	65.4
Were available to start work within four weeks	34.7	35.7	33.2	45.5	42.0	45.1
Were not available to start work within four weeks	23.3	17.6	25.5	19.7	14.8	20.3
Wanted to work but were not actively looking for work and were available to start work within four weeks	821.5	837.2	863.9	818.0	767.1	751.1
Discouraged jobseekers	118.9	118.4	110.9	105.8	106.5	81.7
Other	702.6	718.7	753.0	712.2	660.6	669.5
Without marginal attachment to the labour force(c)	2 735.8	2 803.7	2 716.1	2 829.2	2 860.7	2 948.7
Wanted to work but were not actively looking for work and were not available to start work within four weeks	308.4	298.7	287.1	309.8	335.5	313.7
Did not want to work	2 328.7	2 415.4	2 337.6	2 433.7	2 408.5	2 458.9

(a) Comparability between 2001 and previous years, of estimates of persons not in the labour force who wanted to work (in particular discouraged jobseekers), may have been affected by minor changes to the questionnaire for the 2001 survey. See paragraph 18 of the Explanatory Notes for more details.

(b) Civilian population estimates for 1996, 1997, 1998, 1999 were revised in the 2000 publication. See paragraph 14 of the Explanatory Notes.

(c) Includes persons who were permanently unable to work.

PERSONS NOT IN THE LABOUR FORCE, Main Activity

AGE GROUP (YEARS)

	15-24	25-34	35-44	45-54	55-59	60-64	65-69	Total
	'000	'000	'000	'000	'000	'000	'000	'000
MALES								
Retired or voluntarily inactive	*2.3	*1.8	6.6	24.7	53.8	111.2	205.5	406.0
Home duties or childcare	*3.2	13.5	21.9	14.2	8.8	10.4	7.3	79.3
Attending an educational institution	321.8	35.9	14.9	6.4	*1.0	*1.3	**0.4	381.8
Own disability or handicap	5.9	15.7	21.1	30.0	19.4	20.5	6.2	119.0
Own illness or injury	9.2	23.2	28.7	50.3	36.2	38.3	18.8	204.7
Looking after ill or disabled person	**0.4	*2.3	*3.8	5.7	*4.7	*4.6	*2.8	24.5
Travel, holiday or leisure activity	8.8	10.4	*3.8	*5.5	5.8	9.0	12.1	55.4
Working in unpaid voluntary job	*2.7	*2.4	*1.7	*2.8	*4.7	7.3	*3.3	24.8
Other	*5.6	7.3	6.8	7.3	*4.2	*2.3	*1.2	34.8
Total	359.9	112.6	109.5	147.0	138.7	205.0	257.7	1 330.3
FEMALES								
Retired or voluntarily inactive	*1.9	*1.4	*2.1	20.8	42.4	120.4	154.8	343.8
Home duties or childcare	92.7	341.0	329.2	246.8	144.4	122.8	115.4	1 392.4
Attending an educational institution	289.6	31.8	21.8	10.3	*2.9	*0.9	**0.3	357.5
Own disability or handicap	*5.5	7.4	7.0	16.1	10.5	8.5	*2.7	57.6
Own illness or injury	7.9	8.0	16.5	32.7	22.7	11.5	*5.0	104.4
Looking after ill or disabled person	*1.0	*2.0	7.3	24.9	15.9	13.5	7.7	72.3
Travel, holiday or leisure activity	*4.7	*5.1	*1.7	6.8	*5.1	12.0	13.2	48.6
Working in unpaid voluntary job	*1.0	*0.9	*4.4	7.5	7.9	7.5	6.3	35.6
Other	*4.9	*4.8	*3.7	*4.8	*2.4	*1.6	**0.5	22.7
Total	409.2	402.4	393.6	370.6	254.2	298.8	306.1	2 434.9
PERSONS								
Retired or voluntarily inactive	*4.2	*3.2	8.8	45.5	96.2	231.6	360.3	749.7
Home duties or childcare	95.9	354.6	351.1	261.0	153.2	133.2	122.7	1 471.7
Attending an educational institution	611.4	67.7	36.7	16.7	*3.9	*2.2	**0.8	739.4
Own disability or handicap	11.4	23.1	28.1	46.1	29.9	29.0	8.9	176.5
Own illness or injury	17.1	31.2	45.2	83.0	59.0	49.8	23.8	309.1
Looking after ill or disabled person	*1.5	*4.3	11.1	30.6	20.7	18.1	10.5	96.8
Travel, holiday or leisure activity	13.6	15.5	*5.5	12.3	10.9	21.0	25.2	104.0
Working in unpaid voluntary job	*3.7	*3.3	6.1	10.3	12.7	14.8	9.6	60.4
Other	10.4	12.1	10.5	12.1	6.6	*4.0	*1.8	57.5
Total	769.1	515.0	503.1	517.6	393.0	503.7	563.7	3 765.2

* estimate has a relative standard error of between 25% and 50% and should be used with caution

** estimate has a relative standard error greater than 50% and is considered too unreliable for general use

PERSONS WITH MARGINAL ATTACHMENT TO THE LABOUR FORCE

	WANTED TO WORK, NOT ACTIVELY LOOKING AND WERE AVAILABLE			Total with marginal attachment(a)	Total not in the labour force	Proportion not in the labour force(b)
	Discouraged jobseekers	Other	Total			
	'000	'000	'000	'000	'000	%
MALES						
State or territory of usual residence						
New South Wales	8.4	60.2	68.6	79.9	463.1	20.1
Victoria	8.1	44.8	52.8	59.6	322.7	18.8
Queensland	*4.8	42.6	47.4	53.8	241.9	19.3
South Australia	*3.0	21.2	24.1	26.3	117.1	22.6
Western Australia	*2.5	21.1	23.6	26.9	121.1	17.8
Tasmania	**0.9	6.3	7.2	8.2	39.7	24.7
Northern Territory(c)	**0.3	*1.5	*1.8	*1.8	7.0	13.0
Australian Capital Territory	**0.4	*2.4	*2.8	*3.2	17.6	15.7
Age group (years)						
15-19	*2.7	71.8	74.5	82.0	266.9	39.0
20-24	*1.2	19.0	20.1	28.7	93.0	13.5
25-34	*2.1	31.5	33.6	39.6	112.6	7.9
35-44	*2.5	27.0	29.5	32.9	109.5	7.6
45-54	*3.8	21.9	25.8	29.4	147.0	11.2
55-59	*5.4	12.7	18.1	19.2	138.7	27.2
60-64	6.7	12.7	19.3	20.5	205.0	50.9
65-69	*3.9	*3.5	7.5	7.5	257.7	80.2
Relationship in household						
Family member	21.1	160.5	181.6	203.0	1 044.6	19.1
Husband, wife or partner	15.0	60.1	75.1	83.3	638.1	16.0
Lone parent	—	7.4	7.4	8.2	24.4	24.1
Dependent student	*2.0	68.4	70.4	76.3	251.3	53.0
Non-dependent child	*2.3	18.3	20.6	26.0	90.8	11.7
Other family person	*1.8	6.3	8.1	9.2	39.9	27.3
Non-family member	6.7	31.1	37.8	44.9	226.6	20.9
Relationship not determined	**0.6	8.5	9.1	11.9	59.2	25.5
Country of birth						
Born in Australia	17.0	157.6	174.6	197.0	890.9	18.0
Born overseas	11.4	42.5	53.8	62.7	439.4	24.0
Born in main English-speaking countries	*2.3	14.6	16.9	18.4	122.9	17.8
Born in other than main English-speaking countries	9.1	27.9	37.0	44.4	316.5	27.8
Total	28.3	200.1	228.4	259.7	1 330.3	19.6

* estimate has a relative standard error of between 25% and 50% and should be used with caution

** estimate has a relative standard error greater than 50% and is considered too unreliable for general use

— nil or rounded to zero (including null cells)

(a) Includes wanted to work and actively looking for work.

(b) Proportion of the civilian population not in the labour force.

(c) Refers to mainly urban areas only. For more information see paragraph 7 of the Explanatory Notes.

	WANTED TO WORK, NOT ACTIVELY LOOKING AND WERE AVAILABLE			Total with marginal attachment(a)	Total not in the labour force	Proportion not in the labour force(b) %
	Discouraged jobseekers	Other	Total			
	'000	'000	'000			
FEMALES						
State or territory of usual residence						
New South Wales	18.1	147.2	165.3	176.1	843.1	37.0
Victoria	13.0	109.2	122.2	131.4	618.3	36.1
Queensland	12.3	97.8	110.1	117.9	435.1	34.8
South Australia	*3.3	40.5	43.7	45.6	197.0	37.9
Western Australia	*4.2	50.7	54.8	57.6	232.3	34.7
Tasmania	*1.9	14.6	16.6	17.4	65.9	40.2
Northern Territory(c)	**0.2	*3.1	*3.3	*3.6	13.3	25.4
Australian Capital Territory	**0.4	6.4	6.7	7.1	30.0	26.5
Age group (years)						
15-19	*1.4	62.1	63.6	68.3	256.9	39.5
20-24	**0.5	49.3	49.8	57.0	152.3	22.7
25-34	*5.4	139.1	144.5	153.2	402.4	28.0
35-44	10.8	126.0	136.7	143.1	393.6	26.9
45-54	16.2	57.6	73.8	78.9	370.6	28.3
55-59	8.3	21.4	29.7	31.4	254.2	50.4
60-64	7.5	10.4	17.9	18.2	298.8	75.8
65-69	*3.3	*3.5	6.7	6.7	306.1	91.5
Relationship in household						
Family member	45.3	421.9	467.1	494.5	2 074.5	36.6
Husband, wife or partner	31.6	257.7	289.3	304.1	1 473.2	37.2
Lone parent	10.2	97.8	108.0	115.2	276.6	44.7
Dependent student	*1.3	46.6	48.0	52.5	219.9	44.8
Non-dependent child	**0.8	13.8	14.6	15.4	55.5	12.1
Other family person	*1.3	6.0	7.3	7.3	49.2	37.8
Non-family member	6.1	33.1	39.2	44.2	272.9	31.2
Relationship not determined	*2.0	14.4	16.4	18.1	87.5	39.0
Country of birth						
Born in Australia	28.4	352.5	380.9	403.3	1 629.7	33.0
Born overseas	25.0	116.8	141.8	153.5	805.2	44.0
Born in main English-speaking countries	*5.2	42.1	47.3	51.3	230.3	35.5
Born in other than main English-speaking countries	19.7	74.8	94.5	102.2	574.9	48.7
Total	53.3	469.4	522.7	556.8	2 434.9	36.0

* estimate has a relative standard error of between 25% and 50% and should be used with caution

** estimate has a relative standard error greater than 50% and is considered too unreliable for general use

(a) Includes wanted to work and actively looking for work.

(b) Proportion of the civilian population not in the labour force.

(c) Refers to mainly urban areas only. For more information see paragraph 7 of the Explanatory Notes.

	WANTED TO WORK, NOT ACTIVELY LOOKING AND WERE AVAILABLE			Total with marginal attachment(a)	Total not in the labour force	Proportion not in the labour force(b)
	Discouraged jobseekers	Other	Total			
	'000	'000	'000			
PERSONS						
State or territory of usual residence						
New South Wales	26.5	207.5	233.9	256.0	1 306.2	28.5
Victoria	21.1	153.9	175.0	191.0	941.0	27.5
Queensland	17.1	140.3	157.4	171.7	677.0	27.0
South Australia	6.3	61.6	67.9	72.0	314.1	30.3
Western Australia	6.7	71.8	78.5	84.5	353.4	26.2
Tasmania	*2.8	20.9	23.7	25.6	105.7	32.5
Northern Territory(c)	**0.5	*4.6	*5.1	*5.4	20.3	19.1
Australian Capital Territory	**0.7	8.8	9.5	10.3	47.6	21.2
Age group (years)						
15-19	*4.1	134.0	138.1	150.2	523.8	39.3
20-24	*1.7	68.2	69.9	85.8	245.3	18.0
25-34	7.5	170.6	178.2	192.7	515.0	18.0
35-44	13.3	153.0	166.3	176.0	503.1	17.3
45-54	20.0	79.5	99.5	108.2	517.6	19.8
55-59	13.7	34.1	47.8	50.7	393.0	38.7
60-64	14.1	23.1	37.2	38.7	503.7	63.2
65-69	7.2	7.0	14.2	14.2	563.7	86.0
Relationship in household						
Family member	66.3	582.4	648.7	697.4	3 119.0	28.0
Husband, wife or partner	46.6	317.8	364.3	387.4	2 111.3	26.6
Lone parent	10.2	105.2	115.4	123.4	301.0	41.8
Dependent student	*3.3	115.0	118.4	128.8	471.3	48.9
Non-dependent child	*3.1	32.1	35.2	41.3	146.4	11.8
Other family person	*3.1	12.3	15.4	16.5	89.1	32.3
Non-family member	12.8	64.2	77.0	89.1	499.5	25.5
Relationship not determined	*2.6	22.9	25.4	30.0	146.7	32.1
Country of birth						
Born in Australia	45.4	510.2	555.5	600.3	2 520.6	25.5
Born overseas	36.3	159.3	195.6	216.2	1 244.6	34.0
Born in main English-speaking countries	7.5	56.6	64.2	69.6	353.2	26.3
Born in other than main English-speaking countries	28.8	102.6	131.4	146.6	891.4	38.5
Total	81.7	669.5	751.1	816.5	3 765.2	27.8

* estimate has a relative standard error of between 25% and 50% and should be used with caution

** estimate has a relative standard error greater than 50% and is considered too unreliable for general use

(a) Includes wanted to work and actively looking for work.

(b) Proportion of the civilian population not in the labour force.

(c) Refers to mainly urban areas only. For more information see paragraph 7 of the Explanatory Notes.

	WANTED TO WORK, NOT ACTIVELY LOOKING AND WERE AVAILABLE			Total with marginal attachment(a)	Total not in the labour force
	Discouraged jobseekers	Other	Total		
	'000	'000	'000		
MALES					
Time since last job					
Had a job	25.7	141.2	166.9	191.8	1 044.4
Under twelve months	7.2	68.1	75.3	89.7	214.0
1 and under 3 years	6.4	38.6	45.0	51.4	216.6
3 and under 5 years	*4.2	13.0	17.2	19.6	142.6
5 and under 10 years	*3.9	12.6	16.5	17.7	227.5
10 and under 20 years	*3.9	7.6	11.4	12.1	189.1
20 years or more	**0.1	*1.3	*1.4	*1.4	54.5
Never had a job	*2.7	58.9	61.6	67.9	285.9
Main activity					
Retired or voluntarily inactive	9.9	17.3	27.2	28.8	406.0
Home duties or childcare	*3.2	20.9	24.1	27.2	79.3
Attending an educational institution	*5.0	92.0	97.0	111.2	381.8
Own disability or handicap	**0.8	6.1	6.8	8.4	119.0
Own illness or injury	**0.6	26.8	27.4	31.4	204.7
Looking after ill or disabled person	**0.6	*3.3	*4.0	*4.4	24.5
Travel, holiday or leisure activity	*3.1	14.7	17.8	19.0	55.4
Working in unpaid voluntary job	*1.3	*4.4	5.8	7.0	24.8
Other	*3.8	14.6	18.3	22.3	34.8
Total	28.3	200.1	228.4	259.7	1 330.3
FEMALES					
Time since last job					
Had a job	49.0	406.2	455.2	484.3	2 040.7
Under twelve months	*5.3	105.5	110.7	121.7	341.0
1 and under 3 years	8.9	95.2	104.2	111.8	337.9
3 and under 5 years	*2.6	58.4	61.0	66.1	225.1
5 and under 10 years	11.7	77.8	89.5	92.7	368.9
10 and under 20 years	12.4	47.6	60.0	61.6	349.4
20 years or more	8.1	21.8	29.9	30.4	418.3
Never had a job	*4.4	63.1	67.5	72.5	394.2
Main activity					
Retired or voluntarily inactive	*3.6	10.3	13.9	14.3	343.8
Home duties or childcare	38.7	330.3	368.9	386.2	1 392.4
Attending an educational institution	*3.4	79.1	82.5	92.5	357.5
Own disability or handicap	—	*3.3	*3.3	*3.7	57.6
Own illness or injury	**0.2	15.7	15.9	16.8	104.4
Looking after ill or disabled person	*1.1	7.3	8.4	9.7	72.3
Travel, holiday or leisure activity	*1.8	11.2	13.0	13.7	48.6
Working in unpaid voluntary job	*3.9	*4.9	8.8	9.5	35.6
Other	**0.8	7.2	8.0	10.5	22.7
Total	53.3	469.4	522.7	556.8	2 434.9

* estimate has a relative standard error of between 25% and 50% and should be used with caution

** estimate has a relative standard error greater than 50% and is considered too unreliable for general use

— nil or rounded to zero (including null cells)

(a) Includes wanted to work and were actively looking for work.

	WANTED TO WORK, NOT ACTIVELY LOOKING AND WERE AVAILABLE			Total with marginal attachment(a)	Total not in the labour force
	Discouraged jobseekers	Other	Total		
	'000	'000	'000		
PERSONS					
Time since last job					
Had a job	74.6	547.5	622.1	676.1	3 085.1
Under twelve months	12.4	173.6	186.0	211.4	555.0
1 and under 3 years	15.4	133.8	149.2	163.2	554.6
3 and under 5 years	6.8	71.4	78.2	85.7	367.7
5 and under 10 years	15.6	90.4	106.0	110.4	596.4
10 and under 20 years	16.2	55.2	71.4	73.7	538.5
20 years or more	8.2	23.1	31.3	31.8	472.9
Never had a job	7.1	122.0	129.0	140.4	680.1
Main activity					
Retired or voluntarily inactive	13.4	27.7	41.1	43.1	749.7
Home duties or childcare	41.9	351.1	393.0	413.3	1 471.7
Attending an educational institution	8.3	171.1	179.5	203.7	739.4
Own disability or handicap	**0.8	9.4	10.1	12.1	176.5
Own illness or injury	**0.8	42.4	43.3	48.2	309.1
Looking after ill or disabled person	*1.7	10.7	12.4	14.1	96.8
Travel, holiday or leisure activity	*4.9	25.9	30.8	32.7	104.0
Working in unpaid voluntary job	*5.3	9.3	14.6	16.4	60.4
Other	*4.5	21.8	26.4	32.7	57.5
Total	81.7	669.5	751.1	816.5	3 765.2

** estimate has a relative standard error greater than 50% and is considered too unreliable for general use

* estimate has a relative standard error of between 25% and 50% and should be used with caution

(a) Includes wanted to work and were actively looking for work.

	AGE GROUP (YEARS)					SEX		
	15-24	25-34	35-44	45-54	55-69	Males	Females	Persons
	'000	'000	'000	'000	'000	'000	'000	'000
Wanted to work and were actively looking for work	28.0	14.6	9.7	8.7	*4.4	31.3	34.1	65.4
Were available to start work within four weeks	17.8	11.5	7.0	*5.4	*3.5	21.5	23.6	45.1
Were not available to start work within four weeks	10.2	*3.1	*2.7	*3.3	**0.9	9.8	10.5	20.3
Wanted to work but were not actively looking for work and were available to start work within four weeks	208.0	178.2	166.3	99.5	99.2	228.4	522.7	751.1
Discouraged jobseekers	5.8	7.5	13.3	20.0	35.0	28.3	53.3	81.7
Considered too young or too old by employers	**0.7	—	**0.9	6.4	23.5	12.9	18.5	31.4
Lacked the necessary schooling, training, skills or experience	*1.6	*2.0	*4.0	*5.4	*2.8	*2.7	13.0	15.7
Difficulties because of language or ethnic background	**0.2	*2.9	*2.9	*3.7	**0.4	*2.3	7.8	10.1
No jobs in locality or line of work	*3.0	*2.6	*3.8	*3.3	7.0	8.6	11.1	19.7
No jobs at all	**0.4	—	*1.8	*1.2	*1.3	*1.8	*2.8	*4.6
Other reasons	202.2	170.6	153.0	79.5	64.2	200.1	469.4	669.5
Personal reasons	137.5	36.9	43.3	38.7	37.5	139.7	154.1	293.8
Own ill health, physical disability or pregnancy	11.3	16.0	21.3	22.7	21.4	44.3	48.3	92.6
Attending an educational institution	121.0	13.1	11.7	*3.4	**0.6	77.9	71.9	149.8
Other personal reasons	*5.1	7.8	10.4	12.6	15.5	17.6	33.9	51.4
Family reasons	31.1	105.8	88.9	24.9	10.4	16.8	244.2	261.0
Ill health of other than self	*2.0	*3.2	*3.1	*4.9	*3.8	*4.0	13.1	17.1
Childcare	22.4	83.6	57.5	6.9	**0.7	7.7	163.3	171.0
Other family considerations	6.8	19.0	28.3	13.0	5.8	*5.1	67.8	72.8
No jobs in suitable hours	*2.4	*1.1	*1.4	*1.4	**0.4	*1.6	*5.0	6.7
Other reasons	12.8	8.5	8.4	*5.2	8.0	16.9	26.1	43.0
Had a job to go to(a)	14.4	16.2	8.3	7.3	*5.1	20.8	30.5	51.3
Did not know	*3.9	*2.2	*2.7	*2.0	*2.9	*4.3	9.5	13.7
Total	236.0	192.7	176.0	108.2	103.5	259.7	556.8	816.5

* estimate has a relative standard error of between 25% and 50% and should be used with caution

** estimate has a relative standard error greater than 50% and is considered too unreliable for general use

— nil or rounded to zero (including null cells)

(a) Includes persons who had a job, but up until the reference week had been away from work without pay for four weeks or longer and had not been actively looking for work.

	INTENTION			FULL-TIME OR PART-TIME PREFERENCE		Total(a)(b)
	<i>Intended to enter</i>	<i>Might enter</i>	<i>Did not intend to enter</i>	<i>Full-time</i>	<i>Part-time</i>	
	'000	'000	'000	'000	'000	
Sex						
Males	188.0	34.6	30.4	107.3	114.4	259.7
Females	296.8	93.2	138.8	105.1	368.8	556.8
Wanted to work and were actively looking for work	65.4	—	—	26.1	32.3	65.4
Were available to start work within four weeks	45.1	—	—	15.7	24.4	45.1
Were not available to start work within four weeks	20.3	—	—	10.5	7.9	20.3
Wanted to work but were not actively looking for work and were available to start work within four weeks	419.4	127.8	169.2	186.2	450.9	751.1
Discouraged jobseekers	39.2	14.3	24.8	19.2	36.4	81.7
Considered too young or too old by employers	8.6	5.9	15.1	*4.0	11.8	31.4
Lacked the necessary schooling, training, skills or experience	8.6	*3.1	*3.6	*3.4	9.4	15.7
Difficulties because of language or ethnic background	*5.2	*2.6	*1.6	*4.6	*3.7	10.1
No jobs in locality or line of work	13.3	*2.7	*3.5	6.2	9.3	19.7
No jobs at all	*3.5	—	*1.1	*1.1	*2.2	*4.6
Other reasons	380.2	113.5	144.4	167.0	414.5	669.5
Personal reasons	182.5	48.8	51.5	83.8	168.5	293.8
Own ill health, physical disability or pregnancy	47.6	18.3	21.8	26.4	47.1	92.6
Attending an educational institution	109.7	22.7	13.6	44.9	98.4	149.8
Other personal reasons	25.2	7.8	16.2	12.4	23.0	51.4
Family reasons	110.2	53.2	82.2	41.6	189.5	261.0
Ill health of other than self	9.8	*3.1	*2.5	*3.1	10.5	17.1
Childcare	65.9	35.3	60.6	27.7	124.3	171.0
Other family considerations	34.5	14.8	19.2	10.8	54.7	72.8
No jobs in suitable hours	*3.7	*1.6	*1.2	**0.3	*5.3	6.7
Other reasons	26.9	7.3	6.3	13.5	20.7	43.0
Had a job to go to(c)	48.4	*1.1	*1.2	25.1	21.4	51.3
Did not know	8.5	*1.5	*2.0	*2.8	9.0	13.7
Total	484.8	127.8	169.2	212.4	483.2	816.5

— nil or rounded to zero (including null cells)

* estimate has a relative standard error of between 25% and 50% and should be used with caution

** estimate has a relative standard error greater than 50% and is considered too unreliable for general use

(a) Includes those persons who did not know whether they intended to enter the labour force in the next 12 months.

(b) Includes persons who had 'no preference' for full-time or part-time work or were 'undecided'.

(c) Includes persons who had a job but, up to the end of the reference week, had been away from work without pay for four weeks or longer and had not been actively looking for work.

	<i>Wanted to work but neither looking nor available</i>	<i>Did not want to work</i>	<i>Total without marginal attachment(a)</i>	<i>Total not in the labour force</i>
	'000	'000	'000	'000
MALES				
State or territory of usual residence				
New South Wales	30.6	294.6	383.2	463.1
Victoria	31.4	206.0	263.1	322.7
Queensland	22.9	152.2	188.1	241.9
South Australia	10.0	73.0	90.8	117.1
Western Australia	10.8	78.8	94.2	121.1
Tasmania	*3.1	24.6	31.6	39.7
Northern Territory(b)	*1.0	*3.7	*5.2	7.0
Australian Capital Territory	*1.4	10.7	14.4	17.6
Age group (years)				
15-19	26.3	157.3	184.9	266.9
20-24	12.5	48.8	64.3	93.0
25-34	18.8	42.6	73.0	112.6
35-44	17.6	42.2	76.6	109.5
45-54	18.0	72.0	117.6	147.0
55-59	7.1	89.3	119.5	138.7
60-64	8.3	152.8	184.5	205.0
65-69	*2.6	238.5	250.2	257.7
Relationship in household				
Family member	86.6	669.2	841.6	1 044.6
Husband, wife or partner	44.0	450.8	554.7	638.1
Lone parent	*3.2	10.8	16.2	24.4
Dependent student	25.5	149.5	175.0	251.3
Non-dependent child	10.5	35.5	64.9	90.8
Other family person	*3.3	22.6	30.7	39.9
Non-family member	19.8	134.9	181.7	226.6
Relationship not determined	*4.8	39.3	47.3	59.2
Country of birth				
Born in Australia	75.1	534.5	694.0	890.9
Born overseas	36.0	309.0	376.7	439.4
Born in main English-speaking countries	10.3	86.4	104.5	122.9
Born in other than main English-speaking countries	25.7	222.6	272.1	316.5
Time since last job				
Had a job	86.0	669.2	852.6	1 044.4
Under twelve months	25.6	93.8	124.3	214.0
1 and under 3 years	27.3	128.8	165.3	216.6
3 and under 5 years	10.9	98.7	123.1	142.6
5 and under 10 years	12.2	171.8	209.8	227.5
10 and under 20 years	8.6	137.5	177.0	189.1
20 years or more	*1.5	38.5	53.1	54.5
Never had a job	25.1	174.3	218.1	285.9
Main activity				
Retired or voluntarily inactive	7.6	352.2	377.1	406.0
Home duties or childcare	10.0	37.0	52.2	79.3
Attending an educational institution	43.6	226.1	270.6	381.8
Own disability or handicap	6.6	54.5	110.5	119.0
Own illness or injury	32.4	102.3	173.2	204.7
Looking after ill or disabled person	*2.7	16.9	20.1	24.5
Travel, holiday or leisure activity	*4.0	31.0	36.4	55.4
Working in unpaid voluntary job	*1.3	15.3	17.8	24.8
Other	*2.9	8.1	12.6	34.8
Total	111.2	843.5	1 070.6	1 330.3

* estimate has a relative standard error of between 25% and 50% and should be used with caution

(a) Includes persons who were permanently unable to work.

(b) Refers to mainly urban areas only. For more information see paragraph 7 of the Explanatory Notes.

	<i>Wanted to work but neither looking nor available</i>	<i>Did not want to work</i>	<i>Total without marginal attachment(a)</i>	<i>Total not in the labour force</i>
	'000	'000	'000	'000
.....				
FEMALES				
State or territory of usual residence				
New South Wales	70.6	563.5	667.0	843.1
Victoria	49.8	424.4	486.9	618.3
Queensland	39.5	272.8	317.2	435.1
South Australia	16.1	132.0	151.3	197.0
Western Australia	17.1	154.7	174.6	232.3
Tasmania	*5.4	40.6	48.5	65.9
Northern Territory(b)	*2.0	7.3	9.7	13.3
Australian Capital Territory	*2.1	20.1	22.9	30.0
Age group (years)				
15-19	24.5	162.2	188.7	256.9
20-24	23.9	69.1	95.2	152.3
25-34	66.1	177.4	249.2	402.4
35-44	42.1	201.5	250.6	393.6
45-54	28.6	247.7	291.7	370.6
55-59	10.8	198.0	222.8	254.2
60-64	*4.2	266.5	280.5	298.8
65-69	*2.3	293.1	299.3	306.1
Relationship in household				
Family member	173.5	1 363.5	1 580.0	2 074.5
Husband, wife or partner	112.0	1 032.1	1 169.1	1 473.2
Lone parent	32.3	124.4	161.4	276.6
Dependent student	19.4	146.2	167.5	219.9
Non-dependent child	7.2	23.9	40.2	55.5
Other family person	*2.6	37.0	41.9	49.2
Non-family member	20.9	193.4	228.7	272.9
Relationship not determined	8.1	58.5	69.4	87.5
Country of birth				
Born in Australia	131.6	1 050.3	1 226.4	1 629.7
Born overseas	70.9	565.1	651.7	805.2
Born in main English-speaking countries	19.6	157.4	179.0	230.3
Born in other than main English-speaking countries	51.3	407.7	472.7	574.9
Time since last job				
Had a job	168.7	1 346.3	1 556.4	2 040.7
Under twelve months	64.7	153.7	219.3	341.0
1 and under 3 years	37.1	184.5	226.1	337.9
3 and under 5 years	18.1	136.2	159.0	225.1
5 and under 10 years	20.8	247.9	276.2	368.9
10 and under 20 years	20.0	257.8	287.8	349.4
20 years or more	8.0	366.3	387.9	418.3
Never had a job	33.8	269.2	321.7	394.2
Main activity				
Retired or voluntarily inactive	*4.7	319.0	329.5	343.8
Home duties or childcare	117.6	877.9	1 006.2	1 392.4
Attending an educational institution	44.2	218.8	265.0	357.5
Own disability or handicap	*2.7	27.9	53.9	57.6
Own illness or injury	20.0	52.7	87.6	104.4
Looking after ill or disabled person	7.3	54.2	62.6	72.3
Travel, holiday or leisure activity	*2.3	31.8	34.9	48.6
Working in unpaid voluntary job	*1.1	24.0	26.1	35.6
Other	*2.6	9.0	12.3	22.7
Total	202.5	1 615.5	1 878.1	2 434.9

* estimate has a relative standard error of between 25% and 50% and should be used with caution

(a) Includes persons who were permanently unable to work.

(b) Refers to mainly urban areas only. For more information see paragraph 7 of the Explanatory Notes.

	<i>Wanted to work but neither looking nor available</i>	<i>Did not want to work</i>	<i>Total without marginal attachment(a)</i>	<i>Total not in the labour force</i>
	'000	'000	'000	'000
PERSONS				
State or territory of usual residence				
New South Wales	101.2	858.1	1 050.2	1 306.2
Victoria	81.2	630.4	750.0	941.0
Queensland	62.4	425.0	505.3	677.0
South Australia	26.1	205.0	242.1	314.1
Western Australia	27.9	233.5	268.9	353.4
Tasmania	8.4	65.2	80.1	105.7
Northern Territory(b)	*2.9	11.0	14.9	20.3
Australian Capital Territory	*3.5	30.7	37.3	47.6
Age group (years)				
15-19	50.7	319.5	373.5	523.8
20-24	36.4	117.9	159.6	245.3
25-34	84.9	220.0	322.2	515.0
35-44	59.7	243.7	327.1	503.1
45-54	46.6	319.8	409.4	517.6
55-59	17.9	287.3	342.3	393.0
60-64	12.5	419.3	465.0	503.7
65-69	*4.9	531.5	549.5	563.7
Relationship in household				
Family member	260.0	2 032.8	2 421.6	3 119.0
Husband, wife or partner	156.0	1 482.9	1 723.9	2 111.3
Lone parent	35.5	135.2	177.6	301.0
Dependent student	44.9	295.7	342.5	471.3
Non-dependent child	17.7	59.4	105.0	146.4
Other family person	5.9	59.6	72.6	89.1
Non-family member	40.7	328.3	410.4	499.5
Relationship not determined	13.0	97.9	116.7	146.7
Country of birth				
Born in Australia	206.7	1 584.8	1 920.3	2 520.6
Born overseas	106.9	874.1	1 028.4	1 244.6
Born in main English-speaking countries	29.9	243.8	283.5	353.2
Born in other than main English-speaking countries	77.0	630.3	744.8	891.4
Time since last job				
Had a job	254.7	2 015.5	2 408.9	3 085.1
Under twelve months	90.2	247.5	343.6	555.0
1 and under 3 years	64.4	313.2	391.4	554.6
3 and under 5 years	29.0	234.9	282.0	367.7
5 and under 10 years	33.0	419.7	486.0	596.4
10 and under 20 years	28.6	395.3	464.8	538.5
20 years or more	9.5	404.8	441.1	472.9
Never had a job	59.0	443.5	539.8	680.1
Main activity				
Retired or voluntarily inactive	12.2	671.2	706.6	749.7
Home duties or childcare	127.6	914.9	1 058.4	1 471.7
Attending an educational institution	87.8	444.9	535.6	739.4
Own disability or handicap	9.3	82.5	164.4	176.5
Own illness or injury	52.4	155.1	260.9	309.1
Looking after ill or disabled person	10.1	71.1	82.7	96.8
Travel, holiday or leisure activity	6.3	62.8	71.3	104.0
Working in unpaid voluntary job	*2.4	39.4	44.0	60.4
Other	*5.5	17.1	24.8	57.5
Total	313.7	2 458.9	2 948.7	3 765.2

* estimate has a relative standard error of between 25% and 50% and should be used with caution

(a) Includes persons who were permanently unable to work.

(b) Refers to mainly urban areas only. For more information see paragraph 7 of the Explanatory Notes.

	<i>Males</i>	<i>Females</i>	<i>Persons</i>
	'000	'000	'000
.....			
Age group (years)			
15-24	*3.9	*1.9	5.8
25-34	*2.1	*5.4	7.5
35-44	*2.5	10.8	13.3
45-54	*3.8	16.2	20.0
55-59	*5.4	8.3	13.7
60-64	6.7	7.5	14.1
65-69	*3.9	*3.3	7.2
Whether looked for work in the last twelve months			
Had looked for work	13.8	14.2	28.0
Less than 13 weeks ago	11.5	12.6	24.1
13 and less than 26 weeks ago	*1.0	—	*1.0
26 to 52 weeks ago	*1.3	*1.5	*2.9
Had not looked for work	14.5	39.2	53.7
Intention to enter the labour force in the next twelve months			
Intended to enter(a)	20.4	33.0	53.4
Did not intend to enter(b)	7.9	20.3	28.2
Time since last job			
Had a job	25.7	49.0	74.6
Under twelve months	7.2	*5.3	12.4
1 and under 3 years	6.4	8.9	15.4
3 and under 5 years	*4.2	*2.6	6.8
5 and under 10 years	*3.9	11.7	15.6
10 and under 20 years	*3.9	12.4	16.2
20 years or more	**0.1	8.1	8.2
Never had a job	*2.7	*4.4	7.1
Total	28.3	53.3	81.7

* estimate has a relative standard error of between 25% and 50% and should be used with caution

— nil or rounded to zero (including null cells)

** estimate has a relative standard error greater than 50% and is considered too unreliable for general use

(a) Includes 'might enter the labour force'.

(b) Includes 'did not know'.

PERSONS NOT IN THE LABOUR FORCE, For Childcare Reasons

	AVAILABLE FOR WORK		Not available for work for childcare reasons	Total
	Childcare was the main reason for not looking	Childcare was a reason for not looking		
	'000	'000	'000	'000
FEMALES				
Age group (years)				
15-24	22.4	25.9	7.0	32.9
25-34	81.7	88.2	35.0	123.2
35-44	53.1	61.1	12.4	73.5
45-54	5.7	7.5	*1.4	8.8
55-69	**0.5	**0.9	—	**0.9
Age of youngest child				
0-2	87.1	93.9	39.9	133.8
3-5	41.3	46.6	9.9	56.5
6-11	33.3	41.5	*5.5	46.9
12 years and over	*1.6	*1.6	**0.6	*2.2
Relationship in household				
Family member(a)	159.7	178.6	54.0	232.6
Husband, wife or partner	108.6	120.2	43.7	163.8
Lone parent	51.0	58.3	10.3	68.6
Relationship not determined	*3.6	*4.9	*1.8	6.7
Country of birth				
Born in Australia	122.7	138.1	38.4	176.5
Born overseas	40.6	45.4	17.4	62.9
Born in main English-speaking countries	16.9	18.1	*3.5	21.5
Born in other than main English-speaking countries	23.7	27.4	14.0	41.3
Total	163.3	183.5	55.8	239.3
PERSONS				
Age group (years)				
15-24	22.4	25.9	7.0	32.9
25-34	83.6	90.4	36.4	126.8
35-44	57.5	65.9	13.1	79.0
45-54	6.9	8.6	*1.8	10.5
55-69	**0.7	*1.3	—	*1.3
Age of youngest child				
0-2	89.8	96.5	40.6	137.2
3-5	42.5	48.5	10.3	58.8
6-11	37.1	45.6	6.8	52.4
12 years and over	*1.6	*1.6	**0.6	*2.2
Relationship in household				
Family member(a)	166.7	186.6	56.2	242.8
Husband, wife or partner	112.9	124.7	45.1	169.8
Lone parent	53.6	61.7	11.1	72.8
Relationship not determined	*4.3	5.6	*2.1	7.8
Country of birth				
Born in Australia	129.3	145.5	40.0	185.5
Born overseas	41.8	46.8	18.3	65.0
Born in main English-speaking countries	17.4	18.5	*3.5	22.0
Born in other than main English-speaking countries	24.4	28.2	14.8	43.0
Total(b)	171.0	192.3	58.3	250.6

* estimate has a relative standard error of between 25% and 50% and should be used with caution

** estimate has a relative standard error greater than 50% and is considered too unreliable for general use

— nil or rounded to zero (including null cells)

(a) Includes non-dependent child.

(b) Includes males.

	STATUS IN EMPLOYMENT		FULL-TIME OR PART-TIME STATUS		Total(a)
	Employee	Own account worker/Employer	Full-time	Part-time	
	'000	'000	'000	'000	
MALES					
Reason for ceasing last job					
Job loser	498.1	63.9	435.0	118.2	562.7
Retrenched, dismissed	171.0	*4.7	135.9	38.5	175.7
Job was temporary or seasonal	75.1	*1.8	31.8	43.3	77.8
Own ill health or injury	247.1	40.5	252.2	31.4	287.6
Business closed down for economic reasons	*4.9	16.8	15.2	*5.1	21.7
Job leaver	365.6	60.7	345.0	78.8	427.1
Unsatisfactory work arrangements	26.6	**0.7	16.0	10.9	27.2
Retired, did not want to work any longer	168.3	24.2	172.4	19.7	192.5
Own disability or handicap	55.0	11.6	60.1	*4.7	66.6
Returned to studies	40.4	*2.5	21.6	21.3	43.3
Pregnancy or to have children	**0.5	—	**0.5	—	**0.5
To get married	—	—	—	—	—
To look after family, house or someone else	22.4	*4.5	20.2	6.2	26.8
To have holidays, moved house or spouse transferred	28.5	*3.2	23.4	8.3	31.7
Business closed down for other reasons	*4.7	11.6	14.2	*2.2	16.3
Other	19.4	*2.4	16.6	*5.5	22.2
Occupation in last job(b)					
Managers and administrators	44.1	14.6	54.3	*4.1	59.2
Professionals	79.1	6.3	66.4	17.2	85.6
Associate professionals	86.5	27.0	101.9	11.1	113.5
Tradespersons and related workers	161.8	39.5	173.1	24.7	201.3
Advanced clerical and service workers	7.9	**0.7	*5.6	*3.0	8.6
Intermediate clerical, sales and service workers	79.6	*2.7	62.9	18.9	82.6
Intermediate production and transport workers	154.0	18.3	142.6	28.1	172.3
Elementary clerical, sales and service workers	68.6	*4.4	37.3	35.7	73.0
Labourers and related workers	181.5	11.0	135.6	54.2	193.3
Whether looked for work in the past twelve months					
Had looked for work	116.8	9.6	76.4	47.0	127.1
Less than 13 weeks ago	88.4	7.5	54.9	38.3	96.3
13 and less than 26 weeks ago	10.0	**0.3	6.8	*3.6	10.8
26 to 52 weeks ago	18.3	*1.7	14.7	*5.1	20.0
Had not looked for work	746.9	115.0	703.7	150.0	862.7
Total	863.7	124.6	780.1	197.0	989.9

* estimate has a relative standard error of between 25% and 50% and should be used with caution

** estimate has a relative standard error greater than 50% and is considered too unreliable for general use

— nil or rounded to zero (including null cells)

(a) Includes persons who were contributing family workers and unpaid voluntary workers, and persons whose full-time and part-time status in their last job varied and those who did not know.

(b) Excludes persons whose occupation was inadequately described.

	STATUS IN EMPLOYMENT		FULL-TIME OR PART-TIME STATUS		Total(a)
	Employee	Own account worker/Employer	Full-time	Part-time	
	'000	'000	'000	'000	
FEMALES					
Reason for ceasing last job					
Job loser	483.3	33.4	242.5	265.0	517.7
Retrenched, dismissed	178.8	*5.3	91.4	88.8	184.5
Job was temporary or seasonal	106.7	*2.5	26.7	80.1	109.3
Own ill health or injury	188.1	13.2	110.6	87.4	201.4
Business closed down for economic reasons	9.7	12.4	13.8	8.7	22.5
Job leaver	1 014.1	87.9	624.7	466.1	1 104.7
Unsatisfactory work arrangements	56.1	*3.2	20.4	38.9	59.7
Retired, did not want to work any longer	197.7	26.3	132.2	89.5	224.0
Own disability or handicap	27.4	*2.3	17.7	11.9	30.1
Returned to studies	57.4	**0.8	22.6	34.8	58.2
Pregnancy or to have children	385.4	10.1	249.2	142.5	395.6
To get married	19.3	**0.8	15.1	*4.5	20.4
To look after family, house or someone else	111.5	8.2	52.4	65.5	119.9
To have holidays, moved house or spouse transferred	105.2	8.6	64.3	48.8	113.8
Business closed down for other reasons	11.0	23.4	26.7	7.1	34.4
Other	43.1	*4.2	24.0	22.6	48.6
Occupation in last job(b)					
Managers and administrators	14.4	10.7	21.4	*3.2	25.5
Professionals	171.8	9.0	107.9	71.1	180.9
Associate professionals	99.9	39.7	103.0	34.9	139.7
Tradespersons and related workers	63.3	8.0	41.6	28.1	71.3
Advanced clerical and service workers	106.2	10.0	78.0	38.0	116.9
Intermediate clerical, sales and service workers	399.1	13.7	214.4	196.5	413.9
Intermediate production and transport workers	83.3	*3.9	61.4	23.4	87.5
Elementary clerical, sales and service workers	286.3	12.3	112.0	181.2	299.6
Labourers and related workers	273.0	13.9	127.6	154.8	287.0
Whether looked for work in the past twelve months					
Had looked for work	182.3	7.8	78.5	108.3	190.5
Less than 13 weeks ago	126.7	*5.6	55.1	75.2	132.6
13 and less than 26 weeks ago	25.5	—	12.0	13.5	25.5
26 to 52 weeks ago	30.1	*2.2	11.4	19.6	32.5
Had not looked for work	1 315.2	113.4	788.7	622.9	1 431.9
<i>Total</i>	<i>1 497.4</i>	<i>121.3</i>	<i>867.2</i>	<i>731.2</i>	<i>1 622.4</i>

* estimate has a relative standard error of between 25% and 50% and should be used with caution

** estimate has a relative standard error greater than 50% and is considered too unreliable for general use

— nil or rounded to zero (including null cells)

(a) Includes persons who were contributing family workers and unpaid voluntary workers, and persons whose full-time and part-time status in their last job varied and those who did not know.

(b) Excludes persons whose occupation was inadequately described.

	STATUS IN EMPLOYMENT		FULL-TIME OR PART-TIME STATUS		Total(a)
	Employee	Own account worker/Employer	Full-time	Part-time	
	'000	'000	'000	'000	
PERSONS					
Reason for ceasing last job					
Job loser	981.3	97.2	677.5	383.3	1 080.4
Retrenched, dismissed	349.8	10.0	227.3	127.2	360.2
Job was temporary or seasonal	181.8	*4.3	58.5	123.4	187.1
Own ill health or injury	435.1	53.7	362.8	118.9	489.0
Business closed down for economic reasons	14.7	29.2	28.9	13.8	44.2
Job leaver	1 379.8	148.6	969.8	544.9	1 531.8
Unsatisfactory work arrangements	82.7	*3.9	36.4	49.8	86.9
Retired, did not want to work any longer	366.0	50.5	304.6	109.2	416.5
Own disability or handicap	82.4	13.9	77.8	16.6	96.7
Returned to studies	97.7	*3.4	44.2	56.2	101.5
Pregnancy or to have children	385.9	10.1	249.7	142.5	396.1
To get married	19.3	**0.8	15.1	*4.5	20.4
To look after family, house or someone else	133.8	12.6	72.7	71.7	146.8
To have holidays, moved house or spouse transferred	133.8	11.8	87.7	57.1	145.5
Business closed down for other reasons	15.7	35.0	40.9	9.3	50.7
Other	62.5	6.6	40.7	28.1	70.7
Occupation in last job(b)					
Managers and administrators	58.5	25.3	75.7	7.2	84.6
Professionals	251.0	15.3	174.3	88.3	266.5
Associate professionals	186.4	66.7	204.8	45.9	253.2
Tradespersons and related workers	225.1	47.5	214.6	52.8	272.6
Advanced clerical and service workers	114.1	10.8	83.6	41.0	125.5
Intermediate clerical, sales and service workers	478.7	16.4	277.3	215.5	496.5
Intermediate production and transport workers	237.4	22.2	204.0	51.4	259.8
Elementary clerical, sales and service workers	355.0	16.7	149.3	216.9	372.6
Labourers and related workers	454.5	24.9	263.2	209.0	480.4
Whether looked for work in the past twelve months					
Had looked for work	299.0	17.4	154.9	155.3	317.6
Less than 13 weeks ago	215.2	13.1	110.0	113.5	228.9
13 and less than 26 weeks ago	35.5	**0.3	18.8	17.1	36.2
26 to 52 weeks ago	48.4	*4.0	26.1	24.7	52.5
Had not looked for work	2 062.1	228.4	1 492.4	772.9	2 294.6
Total	2 361.1	245.8	1 647.3	928.2	2 612.2

* estimate has a relative standard error of between 25% and 50% and should be used with caution

** estimate has a relative standard error greater than 50% and is considered too unreliable for general use

(a) Includes persons who were contributing family workers and unpaid voluntary workers, and persons whose full-time and part-time status in their last job varied and those who did not know.

(b) Excludes persons whose occupation was inadequately described.

	NSW	Vic.	Qld	SA	WA	Tas.	NT(a)	ACT	Aust.
	'000	'000	'000	'000	'000	'000	'000	'000	'000
MALES									
Population 1									
Persons not in the labour force	463.1	322.7	241.9	117.1	121.1	39.7	7.0	17.6	1 330.3
Population 2									
Persons not in the labour force who wanted to work	110.5	91.1	76.7	36.4	37.6	11.2	2.8	4.5	370.9
Population 3									
Persons not in the labour force with marginal attachment to the labour force	79.9	59.6	53.8	26.3	26.9	8.2	1.8	3.2	259.7
Population 4									
Persons not in the labour force who wanted to work but were not actively looking for work and were available to start work within four weeks	68.6	52.8	47.4	24.1	23.6	7.2	1.8	2.8	228.4
Population 5									
Persons not in the labour force who were discouraged jobseekers	8.4	8.1	*4.8	3.0	*2.5	*0.9	**0.3	**0.4	28.3
Population 6									
Persons not in the labour force who wanted to work but were not actively looking for work and were not available to start work within four weeks	30.6	31.4	22.9	10.0	10.8	3.1	*1.0	1.4	111.2
Population 7									
Persons not in the labour force for childcare reasons who wanted to work but were not actively looking for work	*3.0	**0.7	*4.3	*1.2	**1.0	*0.5	**0.5	—	11.2
Population 8									
Persons not in the labour force who had previously had a job	361.5	241.6	198.9	95.2	98.3	30.6	4.5	13.9	1 044.4
Population 9									
Persons not in the labour force without marginal attachment to the labour force	383.2	263.1	188.1	90.8	94.2	31.6	5.2	14.4	1 070.6
Population 10									
Persons not in the labour force whose last job was less than 20 years ago	338.3	227.2	192.0	91.7	94.5	28.2	4.3	13.7	989.9

* estimate has a relative standard error of between 25% and 50% and should be used with caution

** estimate has a relative standard error greater than 50% and is considered too unreliable for general use

— nil or rounded to zero (including null cells)

(a) Refers to mainly urban areas only. For more information see paragraph 7 of the Explanatory Notes.

	NSW	Vic.	Qld	SA	WA	Tas.	NT(a)	ACT	Aust.
	'000	'000	'000	'000	'000	'000	'000	'000	'000
FEMALES									
Population 1									
Persons not in the labour force	843.1	618.3	435.1	197.0	232.3	65.9	13.3	30.0	2 434.9
Population 2									
Persons not in the labour force who wanted to work	246.7	181.2	157.3	61.7	74.8	22.7	5.6	9.3	759.3
Population 3									
Persons not in the labour force with marginal attachment to the labour force	176.1	131.4	117.9	45.6	57.6	17.4	3.6	7.1	556.8
Population 4									
Persons not in the labour force who wanted to work but were not actively looking for work and were available to start work within four weeks	165.3	122.2	110.1	43.7	54.8	16.6	3.3	6.7	522.7
Population 5									
Persons not in the labour force who were discouraged jobseekers	18.1	13.0	12.3	3.3	4.2	1.9	**0.2	**0.4	53.3
Population 6									
Persons not in the labour force who wanted to work but were not actively looking for work and were not available to start work within four weeks	70.6	49.8	39.5	16.1	17.1	5.4	2.0	2.1	202.5
Population 7									
Persons not in the labour force for childcare reasons who wanted to work but were not actively looking for work	84.0	52.7	46.3	18.7	25.0	7.4	2.2	3.0	239.3
Population 8									
Persons not in the labour force who had previously had a job	674.1	512.7	386.8	172.0	203.7	54.5	10.8	26.0	2 040.7
Population 9									
Persons not in the labour force without marginal attachment to the labour force	667.0	486.9	317.2	151.3	174.6	48.5	9.7	22.9	1 878.1
Population 10									
Persons not in the labour force whose last job was less than 20 years ago	526.6	410.8	311.6	134.8	166.2	39.5	10.1	22.7	1 622.4

** estimate has a relative standard error greater than 50% and is considered too unreliable for general use

* estimate has a relative standard error of between 25% and 50% and should be used with caution

(a) Refers to mainly urban areas only. For more information see paragraph 7 of the Explanatory Notes.

	NSW	Vic.	Qld	SA	WA	Tas.	NT(a)	ACT	Aust.
	'000	'000	'000	'000	'000	'000	'000	'000	'000
PERSONS									
Population 1									
Persons not in the labour force	1 306.2	941.0	677.0	314.1	353.4	105.7	20.3	47.6	3 765.2
Population 2									
Persons not in the labour force who wanted to work	357.2	272.3	234.1	98.1	112.4	34.0	8.4	13.8	1 130.2
Population 3									
Persons not in the labour force with marginal attachment to the labour force	256.0	191.0	171.7	72.0	84.5	25.6	5.4	10.3	816.5
Population 4									
Persons not in the labour force who wanted to work but were not actively looking for work and were available to start work within four weeks	233.9	175.0	157.4	67.9	78.5	23.7	5.1	9.5	751.1
Population 5									
Persons not in the labour force who were discouraged jobseekers	26.5	21.1	17.1	6.3	6.7	2.8	*0.5	*0.7	81.7
Population 6									
Persons not in the labour force who wanted to work but were not actively looking for work and were not available to start work within four weeks	101.2	81.2	62.4	26.1	27.9	8.4	2.9	3.5	313.7
Population 7									
Persons not in the labour force for childcare reasons who wanted to work but were not actively looking for work	87.0	53.4	50.6	20.0	26.1	7.8	2.7	3.0	250.6
Population 8									
Persons not in the labour force who had previously had a job	1 035.6	754.3	585.7	267.2	302.0	85.1	15.3	39.9	3 085.1
Population 9									
Persons not in the labour force without marginal attachment to the labour force	1 050.2	750.0	505.3	242.1	268.9	80.1	14.9	37.3	2 948.7
Population 10									
Persons not in the labour force whose last job was less than 20 years ago	864.9	637.9	503.6	226.5	260.8	67.7	14.5	36.4	2 612.2

* estimate has a relative standard error of between 25% and 50% and should be used with caution

(a) Refers to mainly urban areas only. For more information see paragraph 7 of the Explanatory Notes.

EXPLANATORY NOTES

INTRODUCTION

1 The statistics in this publication were compiled from data collected in the Persons Not in the Labour Force Survey that was conducted throughout Australia in September 2001 as a supplement to the monthly Labour Force Survey (LFS). Respondents to the LFS who were in scope of the supplementary survey were asked further questions.

2 The publication *Labour Force, Australia* (cat. no. 6203.0) contains information about survey design, sample redesign, scope, coverage and population benchmarks relevant to the LFS, which also apply to supplementary surveys. It also contains definitions of demographic and labour force characteristics, and information about telephone interviewing relevant to both the LFS and supplementary surveys.

3 From April 2001 the LFS has been conducted using a redesigned questionnaire containing additional questions and some minor definitional changes. These changes also affect the supplementary surveys. For further details, see *Information Paper: Implementing the Redesigned Labour Force Survey Questionnaire* (cat. no. 6295.0) and *Information Paper: Questionnaires Used in the Labour Force Survey* (cat. no. 6232.0).

CONCEPTS SOURCES AND METHODS

4 The conceptual framework used in Australia's Labour Force Survey aligns closely with the standards and guidelines set out in Resolutions of the International Conference of Labour Statisticians. Descriptions of the underlying concepts and structure of Australia's labour force statistics, and the sources and methods used in compiling these estimates, are presented in *Labour Statistics: Concepts, Sources and Methods* (cat. no. 6102.0) which is also available on the ABS web site <<http://www.abs.gov.au>> (About Statistics — Concepts and Classifications).

SCOPE

5 The scope of the LFS is restricted to persons aged 15 and over and excludes the following persons:

- members of the permanent defence forces;
- certain diplomatic personnel of overseas governments, customarily excluded from census and estimated populations;
- overseas residents in Australia;
- members of non-Australian defence forces (and their dependants).

6 Students at boarding schools, patients in hospitals, residents of homes (e.g. retirement homes, homes for persons with handicaps), and inmates of prisons are excluded from all supplementary surveys.

7 This supplementary survey was conducted in both urban and rural areas in all states and territories, but excluded approximately 80,000 persons living in remote and sparsely settled parts of Australia who would otherwise have been within the scope of the survey. The exclusion of these persons will have only a minor impact on any aggregate estimates that are produced for individual states and territories, except the Northern Territory where such persons account for over 20% of the population.

8 Persons aged 70 years and over were also excluded from this survey.

COVERAGE

9 The estimates in this publication relate to persons covered by the survey in September 2001. In the LFS, coverage rules are applied which aim to ensure that each person is associated with only one dwelling and hence has only one chance of selection in the survey. See *Labour Force, Australia* (cat. no. 6203.0).

RELIABILITY OF THE ESTIMATES

10 Estimates in this publication are subject to sampling and non-sampling errors.

EXPLANATORY NOTES *continued*

RELIABILITY OF THE ESTIMATES *continued*

- sampling error is the difference between the published estimate and the value that would have been produced if all dwellings had been included in the survey. For more information see the Technical Note.
- non-sampling errors are inaccuracies that occur because of imperfections in reporting by respondents and interviewers, and errors made in coding and processing data. These inaccuracies may occur in any enumeration, whether it be a full count or a sample. Every effort is made to reduce the non-sampling error to a minimum by careful design of questionnaires, intensive training and supervision of interviewers, and efficient processing procedures.

SEASONAL FACTORS

11 The estimates are based on information collected in the survey month and due to seasonal factors, may not be representative of other months of the year.

CLASSIFICATIONS USED

12 Occupation data are classified according to the *ASCO — Australian Standard Classification of Occupations, Second Edition, 1997* (cat no. 1220.0).

13 Country of birth data are classified according to the *Standard Australian Classification of Countries (SACC), 1998* (cat. no. 1269.0).

REVISION TO HISTORICAL DATA

14 Historical estimates of the civilian population for reference periods 1996 to 1999 were revised in the 2000 publication to exclude institutionalised persons, sparsely settled and remote parts of Australia.

COMPARABILITY OF TIME SERIES

15 Revisions are made to population benchmarks for the LFS after each five-yearly Census of Population and Housing. The last such revision was made in February 1999 to take account of the results of the 1996 Census of Population and Housing. Estimates from supplementary surveys conducted from and including February 1999 are therefore based on revised population benchmarks.

16 Supplementary surveys are not always conducted on the full LFS sample. Since August 1994 the sample for supplementary surveys has been restricted to no more than seven-eighths of the LFS sample. Since it was introduced, this survey has been conducted on various proportional samples and therefore sampling errors associated with previous surveys may vary from the sampling error for this survey.

17 Persons Not in the Labour Force Surveys conducted up to and including September 1987 included all persons aged 15 years and over. From September 1988, the survey excluded all persons aged 70 years and over.

18 Comparability between 2001 and earlier years, of estimates of persons who wanted to work, including discouraged jobseekers, may have been affected by the following:

- As part of the LFS redesigned questionnaire, implemented in April 2001, persons aged 65 and over can specify that they are permanently not intending to work, and as a result were not asked for details about wanting to work and looking for work in the 2001 Persons Not in the Labour Force survey. It is likely that, if they had answered these questions, some of these persons may have been classified as persons who wanted work, and also as discouraged jobseekers.

EXPLANATORY NOTES *continued*

COMPARABILITY OF TIME SERIES *continued*

- A further change in the redesigned LFS questionnaire is that it more accurately identifies 'future starters'; that is, persons waiting to start, within four weeks of the end of the reference week, a new job that they have already obtained (and could have started in the reference week if the job had been available then). Under International Labour Organisation (ILO) guidelines these persons do not have to be actively looking for work to be classified as unemployed, and therefore are not asked questions related to job search activities. If they had been asked why they were not looking for work, it is possible that some may have given reasons other than 'had a job to go to', and as a result could have been classified as wanting to work, and also as discouraged jobseekers.
- Persons who are permanently unable to work have been classified as a separate group within Persons Not in the Labour Force Surveys for many years. In the 2001 survey, the number of people in this group was considerably higher than in previous years, which may have impacted on some of the survey populations.

COMPARABILITY WITH MONTHLY LFS STATISTICS

19 Due to differences in the scope and sample size of this supplementary survey and that of the LFS, the estimation procedure may lead to some small variations between labour force estimates from this survey and those from the LFS.

20 The difference between the estimates appearing in this publication and *Labour Force, Australia* (cat. no. 6203.0) is chiefly the result of excluding persons aged 70 years and over from the sample of this supplementary survey. Over one-quarter (30%) of the civilian population aged 15 years and over who were not in the labour force were excluded from answering questions from this supplementary survey because they were aged 70 years and over.

21 Core LFS series from April 1986 to March 2001 have been revised on the basis of the redesigned LFS questionnaire. Supplementary survey data have not been revised.

22 Further information on persons not in the labour force is available in *Labour Force, Australia* (cat. no. 6203.0). Note that such information refers to all persons aged 15 years and over.

PREVIOUS SURVEYS

23 The Persons Not in the Labour Force Survey was first conducted in May 1975 and again in May 1977. From 1979 to 1987 the survey was collected twice a year (March and September). Since then it has been conducted annually. Results of previous surveys were published in:

- *Persons Not in the Labour Force, Australia*, cat. no. 6220.0
- standard data service *Persons Not in the Labour Force, Australia*, cat. no. 6220.0.40.001 for 1994 and 1995 (available in hardcopy only).

NEXT SURVEY

24 The ABS conducted this survey again in September 2002.

ACKNOWLEDGMENT

25 Australian Bureau of Statistics publications draw extensively on information provided freely by individuals, businesses, governments and other organisations. Their continued cooperation is very much appreciated: without it, the wide range of statistics published by the ABS would not be available. Information received by the ABS is treated in strict confidence as required by the *Census and Statistics Act 1905*.

RELATED PUBLICATIONS

- 26** Other publications which may be of interest include:
- *Job Search Experience of Unemployed Persons, Australia*, cat. no. 6222.0
 - *Labour Statistics: Concepts, Sources and Methods*, cat. no. 6102.0

EXPLANATORY NOTES *continued*

RELATED PUBLICATIONS *continued*

- *Successful and Unsuccessful Job Search Experience, Australia*,
cat. no. 6245.0
- *Underemployed Workers, Australia*, cat. no. 6265.0

27 Current publications and other products released by the ABS are listed in the *Catalogue of Publications and Products* (cat. no. 1101.0). The Catalogue is available from any ABS office or the ABS web site <<http://www.abs.gov.au>>. The ABS also issues a daily Release Advice on the web site which details products to be released in the week ahead.

APPENDIX 1 POPULATIONS AND DATA ITEMS LIST

DATA AVAILABLE ON REQUEST

The ABS has a range of data available from the Persons Not in the Labour Force Survey. This section lists the data items and populations which relate to the survey. More detailed breakdowns of some data items are available on request.

The population(s) for a particular data item refers to those persons in the survey to whom the data item relates. Where alternative output categories are available for the same data item, these are shown and the data item name is followed by a bracketed numeral (e.g. Country of birth (2)).

To obtain data available on request, or for more information about our customised data service contact Annette Milnes on 02 6252 7240 , or by facsimile on 02 6252 7784, or by email to <a.milnes@abs.gov.au>.

- Population 1** Persons not in the labour force.
- Population 2** Persons not in the labour force who wanted to work.
- Population 3** Persons not in the labour force with marginal attachment to the labour force.
- Population 4** Persons not in the labour force who wanted to work but were not actively looking for work and were available to start work within four weeks.
- Population 5** Persons not in the labour force who were discouraged jobseekers.
- Population 6** Persons not in the labour force who wanted to work but were not actively looking for work and not available to start work within four weeks .
- Population 7** Persons not in the labour force for childcare reasons who wanted to work but were not actively looking for work.
- Population 8** Persons not in the labour force who had previously had a job.
- Population 9** Persons not in the labour force without marginal attachment to the labour force.
- Population 10** Persons not in the labour force whose last job was less than 20 years ago.

APPENDIX 1 POPULATIONS AND DATA ITEMS LIST *continued*

Data Items	Populations	Data Items	Populations
1 State or territory of usual residence New South Wales Victoria Queensland South Australia Western Australia Tasmania Northern Territory Australian Capital Territory	All	7C Country of birth (2) Born in Australia Born overseas The Middle East and North Africa Africa (excluding North Africa) Northern America South America, Central America and the Caribbean North-East Asia South-East Asia Southern Asia Europe and the Former USSR Former Yugoslav Republics Germany Greece Italy Netherlands Poland UK and Ireland Oceania and Antarctica New Zealand	All
2 Area of usual residence State capital city Balance of state/territory	All		
3 Region of usual residence Standard labour force dissemination regions	All		
4 Sex Males Females	All		
5 Marital status Married Not married	All		
6 Relationship in household Family member Husband, wife or partner With dependants Without dependants Lone parent With dependants Without dependants Dependent student Non-dependent child Other family person Non-family member Lone person Not living alone Relationship not determined	All	8 Age group (years) 15–19 20–24 25–34 35–44 45–54 55–59 60–64 65–69 Note: Age collected in single years	All
7A Country of birth and period of arrival Born in Australia Born overseas Arrived before 1971 Arrived 1971–1980 Arrived 1981–1990 Arrived 1991–2000 Arrived 2001 to survey date	All	9 Persons not in the Labour Force Summary Variable With marginal attachment to the labour force Wanted to work and were actively looking for work Were available to start work within four weeks Were not available to start work within four weeks Wanted to work but were not actively looking for work and were available to start work within four weeks Discouraged jobseekers Other Without marginal attachment to the labour force Wanted to work but were not actively looking for work and were not available to start work within four weeks Did not want to work Permanently unable to work	1, 8,10
7B Country of birth (1) Born in Australia Born overseas Born in main English-speaking countries Born in other than main English-speaking countries	All		
		10 Whether wanted to work Wanted to work Might want to work Did not want to work Did not know	1, 8,10

APPENDIX 1 POPULATIONS AND DATA ITEMS LIST *continued*

<i>Data Items</i>	<i>Populations</i>	<i>Data Items</i>	<i>Populations</i>
11 Whether looked for work in the last 12 months	All	15 Occupation in last job	All
Had looked for work		Last job less than 20 years ago	
Less than 5 weeks ago		Managers and administrators	
5 and less than 8 weeks ago		Professionals	
8 and less than 13 weeks ago		Associate professionals	
13–52 weeks ago		Tradespersons and related workers	
13 and less than 26 weeks ago		Advanced clerical and service workers	
26 and less than 39 weeks ago		Intermediate clerical, sales and service workers	
39–52 weeks ago		Intermediate production and transport workers	
Had not looked for work		Elementary clerical, sales and service workers	
12 Main activity when not in the labour force	All	Labourers and related workers	
Retired or voluntarily inactive		Last job 20 or more years ago	
Home duties or childcare		Had never had a job	
Attending an educational institution		16 Status in employment in last job	All
Own disability or handicap		Last job less than 20 years ago	
Own illness or injury		Employer	
Looking after ill or disabled person		Own account worker	
Travel, holiday or leisure activity		Employee	
Working in unpaid voluntary job		Contributing family worker	
Other		Unpaid voluntary worker	
13 Time since last job	All	Last job 20 or more years ago	
Had a job		Had never had a job	
Under 12 months		17 Full-time or part-time status in last job	All
1 and under 4 weeks		Last job less than 20 years ago	
4 and under 8 weeks		Full-time	
8 and under 13 weeks		Part-time	
13 and under 26 weeks		Varied/did not know	
26 and under 39 weeks		Last job 20 or more years ago	
39 and under 52 weeks		Had never had a job	
1 and under 3 years		18A Intention to enter the labour force	All
3 and under 10 years		Intended to enter the labour force	
3 and under 5 years		Might enter the labour force	
5 and under 10 years		Did not intend to enter the labour force	
10 years or more		Did not know	
10 and under 20 years		Permanently unable to work	
20 years or more		Not applicable (full-time student)	
Never had a job		18B Intention to enter the labour force in the next 12 months	All
14 Reason for ceasing last job	All	Intended to enter the labour force in the next 12 months	
Had a job		Might enter the labour force in the next 12 months	
Job loser		Did not intend to enter the labour force in the next 12 months	
Retrenched, dismissed		Did not know	
Job was temporary or seasonal		Permanently unable to work	
Own ill health or injury		19 Source of income	All
Business closed down for economic reasons		Government pension or cash benefit	
Job leaver		Profit or loss from own business or share in a partnership	
Unsatisfactory work arrangements		Interest/Rents/Dividends	
Retired, did not want to work any longer		Superannuation or annuity	
Own disability or handicap		Worker's compensation, accident or sickness insurance	
Returned to studies		Other income	
Pregnancy or to have children		Nil or someone else's income	
To get married		20 Type of work preferred	2–7
To look after family, house or someone else		Full-time work preferred	
To have holiday, moved house or spouse transferred		Part-time work preferred	
Business closed down for other reasons		No preference for full-time or part-time work	
Other		Undecided	
Had never had a job			

APPENDIX 1 POPULATIONS AND DATA ITEMS LIST *continued*

<i>Data Items</i>	<i>Populations</i>	<i>Data Items</i>	<i>Populations</i>
<p>21 Main reason for not actively looking for work</p> <p>Wanted to work and were actively looking for work</p> <p style="padding-left: 20px;">Were available to start work within four weeks</p> <p style="padding-left: 20px;">Were not available to start work within four weeks</p> <p>Wanted to work but were not actively looking for work and were available to start work within four weeks</p> <p>Discouraged jobseekers</p> <p style="padding-left: 20px;">Considered too young or too old by employers</p> <p style="padding-left: 20px;">Lacked necessary schooling, training, skills or experience</p> <p style="padding-left: 20px;">Difficulties because of language or ethnic background</p> <p style="padding-left: 20px;">No jobs in locality or line of work</p> <p style="padding-left: 20px;">No jobs at all</p> <p>Other reasons</p> <p style="padding-left: 20px;">Personal reasons</p> <p style="padding-left: 40px;">Own ill health, physical disability or pregnancy</p> <p style="padding-left: 40px;">Attending an educational institution</p> <p style="padding-left: 40px;">Had no need to work</p> <p style="padding-left: 40px;">Give others a chance</p> <p style="padding-left: 40px;">Welfare payments or pension may be affected</p> <p style="padding-left: 40px;">Moved house or holidays</p> <p style="padding-left: 20px;">Family reasons</p> <p style="padding-left: 40px;">Ill health of other than self</p> <p style="padding-left: 40px;">Childcare</p> <p style="padding-left: 80px;">No childcare in locality</p> <p style="padding-left: 80px;">No childcare available at all</p> <p style="padding-left: 80px;">Cost or too expensive</p> <p style="padding-left: 80px;">Booked out or no places available</p> <p style="padding-left: 80px;">Children too young or too old</p> <p style="padding-left: 80px;">Prefers to look after children</p> <p style="padding-left: 80px;">Quality of childcare unsuitable</p> <p style="padding-left: 40px;">Other childcare reasons</p> <p style="padding-left: 40px;">Other family considerations</p> <p style="padding-left: 20px;">No jobs in suitable hours</p> <p style="padding-left: 20px;">Other reasons</p> <p style="padding-left: 40px;">Had a job to go to</p> <p style="padding-left: 40px;">Did not know</p>	<p>3,4</p>	<p>22 All reasons for not actively looking for work</p> <p>Discouraged jobseekers</p> <p style="padding-left: 20px;">Considered too young or too old by employers</p> <p style="padding-left: 20px;">Lacked necessary schooling, training, skills or experience</p> <p style="padding-left: 20px;">Difficulties with language or ethnic background</p> <p style="padding-left: 20px;">No jobs in locality or line of work</p> <p style="padding-left: 20px;">No jobs at all</p> <p>Other reasons</p> <p style="padding-left: 20px;">Personal reasons</p> <p style="padding-left: 40px;">Own ill health, physical disability or pregnancy</p> <p style="padding-left: 40px;">Attending an educational institution</p> <p style="padding-left: 40px;">Had no need to work</p> <p style="padding-left: 40px;">Give others a chance</p> <p style="padding-left: 40px;">Welfare payments or pension may be affected</p> <p style="padding-left: 40px;">Moved house or holidays</p> <p style="padding-left: 20px;">Family reasons</p> <p style="padding-left: 40px;">Ill health of other than self</p> <p style="padding-left: 40px;">Childcare</p> <p style="padding-left: 40px;">Other family considerations</p> <p style="padding-left: 20px;">No jobs in suitable hours</p> <p style="padding-left: 20px;">Other reasons</p> <p style="padding-left: 40px;">Had a job to go to</p> <p style="padding-left: 40px;">Did not know</p>	<p>4</p>
<p>23 Reason not available to start work within four weeks</p> <p>Personal reasons</p> <p style="padding-left: 20px;">Own ill health or physical disability</p> <p style="padding-left: 20px;">Pregnancy</p> <p style="padding-left: 20px;">Studying or returning to studies</p> <p style="padding-left: 20px;">Moved house or holidays</p> <p style="padding-left: 20px;">Family reasons</p> <p style="padding-left: 40px;">Ill health of other than self</p> <p style="padding-left: 40px;">Unable to find suitable childcare</p> <p style="padding-left: 40px;">Children too young, preferred to look after children</p> <p style="padding-left: 20px;">On a job-related training program</p> <p style="padding-left: 20px;">Other reasons</p>	<p>6</p>	<p>24 Marginal attachment summary variable</p> <p>Wanted to work and were actively looking for work</p> <p style="padding-left: 20px;">Were available to start work within four weeks</p> <p style="padding-left: 20px;">Were not available to start work within four weeks</p> <p>Wanted to work but were not actively looking for work and were available to start work within four weeks</p> <p style="padding-left: 20px;">Discouraged jobseekers</p> <p style="padding-left: 20px;">Other</p>	<p>3</p>
<p>25 Age of youngest child</p> <p style="padding-left: 20px;">0–2 years</p> <p style="padding-left: 20px;">3–4 years</p> <p style="padding-left: 20px;">5 years</p> <p style="padding-left: 20px;">6–9 years</p> <p style="padding-left: 20px;">10–11 years</p> <p style="padding-left: 20px;">12 years and over</p>	<p>7</p>	<p>26 Number of children</p> <p style="padding-left: 20px;">Aged 0–2 years</p> <p style="padding-left: 20px;">Aged 3–4 years</p> <p style="padding-left: 20px;">Aged 5 years</p> <p style="padding-left: 20px;">Aged 6–9 years</p> <p style="padding-left: 20px;">Aged 10–11 years</p>	<p>7</p>

APPENDIX 2 SUPPLEMENTARY SURVEYS LIST

SUPPLEMENTARY SURVEYS

The Monthly Population Survey program collects data on particular aspects of the labour force. The following is an historical list of supplementary and special labour force surveys. Data are available in publication form, by subscription or on request. Additional data from these surveys is available on request and can be obtained by contacting the ABS.

	<i>cat. no.</i>	<i>Frequency</i>	<i>Latest issue</i>
Career Experience, Australia	6254.0	Irregular	November 1998
Career Paths of Persons with Trade Qualifications, Australia	6243.0	Discontinued	Final issue 1993
Child Care, Australia	4402.0	Irregular	June 1999
Education and Work, Australia	6227.0	Annual	May 2001
Employee Earnings, Benefits, and Trade Union Membership, Australia	6310.0	Annual	August 2001
Employment Benefits, Australia	6334.0.40.001	Discontinued	Final issue 1994
Forms of Employment, Australia	6359.0	Irregular	November 2001
Job Search Experience of Unemployed Persons, Australia	6222.0	Annual	July 2001
Labour Force Experience, Australia	6206.0	Biennial	February 2001
Labour Force Status and Educational Attainment, Australia	6235.0	Discontinued	Final issue 1994
Labour Force Status and Other Characteristics of Families, Australia(a)	6224.0	Discontinued	Final issue 2000
Labour Force Status and Other Characteristics of Migrants, Australia	6250.0	Irregular	November 1999
Labour Mobility, Australia	6209.0	Biennial	February 2002
Locations of Work, Australia	6275.0	Irregular	June 2000
Multiple Jobholding, Australia(b)	6216.0	Irregular	August 1997
Participation in Education, Australia	6272.0	Discontinued	Final issue 1999
Persons Not in the Labour Force, Australia	6220.0	Annual	September 2001
Persons Who had Re-entered the Labour Force, Australia	6264.0.40.001	Discontinued	Final issue 1995
Persons Who Have Left the Labour Force, Australia	6267.0.40.001	Discontinued	Final issue 1994
Retirement and Retirement Intentions, Australia	6238.0	Irregular	November 1997
Retrenchment and Redundancy, Australia	6266.0	Irregular	July 2001
Successful and Unsuccessful Job Search Experience, Australia	6245.0	Discontinued	Final issue 2000
Superannuation, Australia	6319.0	Discontinued	Final issue 1995
Trade Union Members, Australia	6325.0	Discontinued	Final issue 1996
Underemployed Workers, Australia	6265.0	Annual	September 2001
Working Arrangements, Australia	6342.0	Irregular	August 2000
Work-Related Injuries, Australia	6324.0	Irregular	September 2000

(a) Latest data available on request June 2002.

(b) Latest data available on request July 2001.

TECHNICAL NOTE DATA QUALITY

INTRODUCTION

1 Since the estimates in this publication are based on information obtained from occupants of a sample of dwellings, they are subject to sampling variability. That is, they may differ from those estimates that would have been produced if all dwellings had been included in the survey. One measure of the likely difference is given by the standard error (SE), which indicates the extent to which an estimate might have varied by chance because only a sample of dwellings was included. There are about two chances in three (67%) that a sample estimate will differ by less than one SE from the number that would have been obtained if all dwellings had been included, and about 19 chances in 20 (95%) that the difference will be less than two SEs. Another measure of the likely difference is the relative standard error (RSE), which is obtained by expressing the SE as a percentage of the estimate.

2 Due to space limitations, it is impractical to print the SE of each estimate in the publication. Instead, a table of SEs is provided to enable readers to determine the SE for an estimate from the size of that estimate (see table T1). The SE table is derived from a mathematical model, referred to as the "SE model", which is created using data from a number of past Labour Force Surveys. It should be noted that the SE model only gives an approximate value for the SE for any particular estimate, since there is some minor variation between SEs for different estimates of the same size.

CALCULATION OF STANDARD ERRORS

3 An example of the calculation and the use of SEs in relation to estimates of persons is as follows. Table 3 shows that the estimated number of persons in Australia who were discouraged jobseekers was 81,700. Since this estimate is between 50,000 and 100,000, table T1 shows the SE for Australia will be between 4,050 and 5,300, and can be approximated by interpolation using the following general formula:

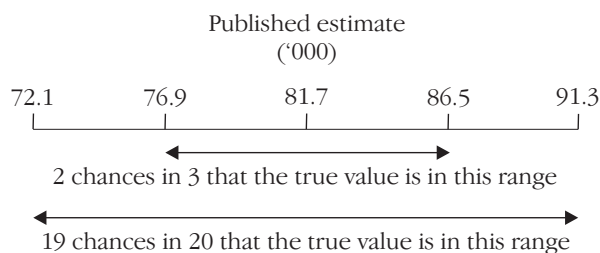
SE of estimate =

$$\text{lower SE} + \left(\left(\frac{\text{size of estimate} - \text{lower estimate}}{\text{upper estimate} - \text{lower estimate}} \right) \times (\text{upper SE} - \text{lower SE}) \right)$$

$$= 4,050 + \left(\left(\frac{81,700 - 50,000}{100,000 - 50,000} \right) \times (5,300 - 4,050) \right)$$

$$= 4,800 \text{ (rounded to the nearest 100)}$$

4 Therefore, there are about two chances in three that the value that would have been produced if all dwellings had been included in the survey will fall in the range 76,900 to 86,500, and about 19 chances in 20 that the value will fall within the range 72,100 to 91,300. This example is illustrated in the diagram below.



CALCULATION OF STANDARD ERRORS *continued*

5 In general, the size of the SE increases as the size of the estimate increases. Conversely, the RSE decreases as the size of the estimate increases. Very small estimates are thus subject to such high RSEs so that their value for most practical purposes is unreliable. In the tables in this publication, only estimates with RSEs of 25% or less are considered reliable for most purposes. Estimates with RSEs greater than 25% but less than or equal to 50% are preceded by an asterisk (e.g. *3.4) to indicate they are subject to high SEs and should be used with caution. Estimates with RSEs of greater than 50%, preceded by a double asterisk (e.g. **0.3), are considered too unreliable for general use and should only be used to aggregate with other estimates to provide derived estimates with RSEs of 25% or less.

PROPORTIONS AND PERCENTAGES

6 Proportions and percentages formed from the ratio of two estimates are also subject to sampling errors. The size of the error depends on the accuracy of both the numerator and the denominator. A formula to approximate the RSE of a proportion is given below. This formula is only valid when x is a subset of y.

$$RSE\left(\frac{x}{y}\right) = \sqrt{[RSE(x)]^2 - [RSE(y)]^2}$$

7 Considering the example above, of the 81,700 persons who were discouraged jobseekers, 28,300 or 34.6% were males. The SE of 28,300 may be calculated by interpolation as 3,200. To convert this to a RSE we express the SE as a percentage of the estimate, or $3,200/28,300 = 11.3\%$. The SE for 81,700 was calculated previously as 4,800, which converted to a RSE is $4,800/81,700 = 5.9\%$. Applying the above formula, the RSE of the proportion is

$$RSE = \sqrt{(11.3)^2 - (5.9)^2} = 9.6\%$$

8 Therefore, the SE for the proportion of males who were discouraged jobseekers is 3.3 percentage points ($= (34.6/100) \times 9.6$). Therefore, there are about two chances in three that the proportion of males who were discouraged jobseekers is between 31.3% and 37.9% and 19 chances in 20 that the proportion is within the range 28.0% to 41.2%.

DIFFERENCES

9 Published estimates may also be used to calculate the difference between two survey estimates (of numbers or percentages). Such an estimate is subject to sampling error. The sampling error of the difference between two estimates depends on their SEs and the relationship (correlation) between them. An approximate SE of the difference between two estimates (x-y) may be calculated by the following formula:

$$SE(x-y) = \sqrt{[SE(x)]^2 + [SE(y)]^2}$$

10 While this formula will only be exact for differences between separate and uncorrelated characteristics or subpopulations, it is expected to provide a good approximation for all differences likely to be of interest in this publication.

11 SEs contained in table T1 are applicable to all estimates from this survey.

TECHNICAL NOTE DATA QUALITY *continued*

STANDARD ERRORS OF ESTIMATES

	STANDARD ERROR									RELATIVE STANDARD ERROR
	NSW	Vic.	Qld	SA	WA	Tas.	NT	ACT	Aust.	Aust.
	no.	no.	no.	no.	no.	no.	no.	no.	no.	%
100	..	110	200	170	180	110	130	140	90	90.0
200	170	190	280	230	250	150	170	170	150	75.0
300	240	250	340	270	300	180	200	200	210	70.0
500	350	360	440	340	380	220	250	230	300	60.0
700	450	440	510	390	440	260	280	260	380	54.3
1,000	570	550	600	450	520	300	330	290	490	49.0
1,500	740	700	720	530	620	350	380	330	630	42.0
2,000	880	830	820	600	700	390	430	370	760	38.0
2,500	1 000	950	900	650	750	450	450	400	900	36.0
3,000	1 100	1 050	1 000	700	850	450	500	450	1 000	33.3
3,500	1 250	1 100	1 050	750	900	500	550	450	1 050	30.0
4,000	1 300	1 200	1 100	800	950	500	550	500	1 150	28.8
5,000	1 500	1 350	1 250	900	1 050	550	600	500	1 300	26.0
7,000	1 800	1 550	1 450	1 000	1 200	650	700	600	1 600	22.9
10,000	2 100	1 850	1 700	1 150	1 350	750	800	700	1 900	19.0
15,000	2 550	2 200	2 000	1 350	1 600	850	900	800	2 350	15.7
20,000	2 900	2 500	2 250	1 550	1 800	950	1 050	900	2 700	13.5
30,000	3 400	2 900	2 700	1 800	2 100	1 150	1 200	1 050	3 250	10.8
40,000	3 800	3 250	3 050	2 050	2 350	1 250	1 300	1 200	3 700	9.3
50,000	4 100	3 500	3 350	2 250	2 550	1 400	1 450	1 300	4 050	8.1
100,000	5 100	4 400	4 450	2 950	3 300	1 800	1 850	1 750	5 300	5.3
150,000	5 750	5 100	5 250	3 450	3 800	2 100	2 100	2 150	6 150	4.1
200,000	6 350	5 700	5 900	3 900	4 200	2 300	..	2 450	6 800	3.4
300,000	7 400	6 750	6 950	4 550	4 800	2 650	..	2 950	7 950	2.7
500,000	9 200	8 500	8 500	5 550	5 700	3 200	9 650	1.9
1,000,000	12 850	11 900	11 100	7 300	7 100	12 650	1.3
2,000,000	18 850	17 300	14 500	9 550	8 800	16 700	0.8
5,000,000	33 850	29 750	20 450	25 600	0.5
10,000,000	44 850	0.4

.. not applicable

GLOSSARY

Actively looking for work	Persons who were taking active steps to find work. Active steps comprise: <ul style="list-style-type: none">■ registering with Centrelink as a jobseeker;■ contacting an employment agency;■ contacting prospective employers;■ answering a newspaper advertisement for a job;■ checking Centrelink touch screens;■ checking factory noticeboards;■ advertising or tendering for work; and■ contacting friends or relatives.
Available to start work within four weeks	Persons who were available to start work within four weeks or, for persons with children aged 12 years or under, could start work within four weeks if suitable child care was available.
Did not want to work	Persons who were not classified as employed or unemployed who: <ul style="list-style-type: none">■ answered 'no' when asked if they would like a job; or■ were aged 65 years or over and said that they were 'permanently not intending to work'.
Discouraged jobseekers	Persons with marginal attachment to the labour force who wanted to work and were available to start work within the next four weeks but whose main reason for not actively looking for work was that they believed they would not find a job for any of the following reasons: <ul style="list-style-type: none">■ considered to be too young/too old by employers;■ lacked necessary schooling, training, skills or experience; or■ difficulties because of language or ethnic background; or■ no jobs in their locality or line of work; or■ no jobs available at all.
Employed	Persons aged 15 and over who, during the reference week: <ul style="list-style-type: none">■ worked for one hour or more for pay, profit, commission or payment in kind, in a job or business or on a farm (comprising employees, employers and own account workers); or■ worked for one hour or more without pay in a family business or on a farm (i.e. contributing family workers); or■ were employees who had a job but were not at work and were:<ul style="list-style-type: none">■ away from work for less than four weeks up to the end of the reference week; or■ away from work for more than four weeks up to the end of the reference week and received pay for some or all of the four week period to the end of the reference week; or■ away from work as a standard work or shift arrangement; or■ on strike or locked out; or■ on workers' compensation and expected to return to their job; or■ were employers or own account workers who had a job, business or farm, but were not at work.
Family	Two or more persons, one of whom is at least 15 years of age, who are related by blood, marriage (registered or de facto), adoption, step or fostering; and who are usually resident in the same household. The basis of a family is formed by identifying the presence of a couple relationship, lone parent-child relationship or other blood relationship. Some households will, therefore, contain more than one family.
Family reasons for not actively looking for work	Includes ill health of a family member, child care and other family considerations.
Full-time work	Work involving 35 or more hours a week.

GLOSSARY *continued*

Had a job to go to	Includes persons who had a job but, up to the end of the reference week, had been away from work without pay for four weeks or longer and had not been actively looking for work. Also includes persons who had a job but had not yet started that job.
Job	Any employment, full-time or part-time, lasting two weeks or more.
Job leavers	Persons who voluntarily ceased their last job.
Job losers	Persons who involuntarily ceased their last job.
Labour Force	The civilian population can be split into two mutually exclusive groups: the labour force (employed and unemployed persons) and persons not in the labour force.
Main English-speaking countries	Comprises the United Kingdom, Ireland, Canada, South Africa, the United States of America and New Zealand.
Marginal attachment to the labour force	<p>Persons who were not in the labour force in the reference week, wanted to work and:</p> <ul style="list-style-type: none">■ were actively looking for work but did not meet the availability criteria to be classified as unemployed; or■ were not actively looking for work but were available to start work within four weeks or could start work within four weeks if child care was available. <p>The criteria for determining those in the labour force are based on activity (i.e. working or looking for work) and availability to start work during the reference week. The criteria associated with marginal attachment to the labour force, in particular the concepts of wanting to work and reasons for not actively looking for work, are more subjective. Hence, the measurement against these criteria is affected by the respondent's own interpretation of the concepts used. An individual respondent's interpretation may be affected by their work aspirations, as well as family, economic and other commitments.</p>
Occupation of last job	All occurrences of occupation in this publication refer to Major Group as defined by <i>ASCO — Australian Standard Classification of Occupations, Second Edition</i> (cat. no. 1220.0).
Part-time work	Work involving less than 35 hours a week.
Permanently not intending to work	Persons who said that they were permanently not intending to work.
Personal reasons for not actively looking for work	Includes own ill health or physical disability, pregnancy, attending an educational institution, had no need to work, to give others a chance, welfare payments or pension may be affected, moved house or on holidays.
Persons in the labour force	Persons who were classified as being in the labour force, that is, either employed or unemployed.
Persons not in the labour force	Persons who were not classified as employed or unemployed.
Persons not in the labour force for child care reasons who wanted to work	<p>Persons who wanted to work and:</p> <ul style="list-style-type: none">■ were not actively looking for work due to child care reasons, but were available to start work within four weeks; or■ were not actively looking for work and were not available to start work within four weeks for child care reasons.
Relationship in household	The relationship of persons who live in the same household.
Time since last job	The elapsed time since ceasing last job.
Unemployed	<p>Persons who were not employed during the reference week, and:</p> <ul style="list-style-type: none">■ had actively looked for full-time or part-time work at any time in the four weeks up to the end of the reference week and:

GLOSSARY *continued*

Unemployed *continued*

- were available for work in the reference week; or
- were waiting to start a new job within four weeks from the end of the reference week, and could have started in the reference week if the job had been available then.

Wanted to work

Persons who were not classified as employed or unemployed and who answered 'yes' or 'maybe' when asked if they would like a job.

FOR MORE INFORMATION...

- INTERNET* **www.abs.gov.au** the ABS web site is the best place to start for access to summary data from our latest publications, information about the ABS, advice about upcoming releases, our catalogue, and Australia Now—a statistical profile.
- LIBRARY* A range of ABS publications is available from public and tertiary libraries Australia-wide. Contact your nearest library to determine whether it has the ABS statistics you require, or visit our web site for a list of libraries.
- CPI INFOLINE* For current and historical Consumer Price Index data, call 1902 981 074 (call cost 77c per minute).
- DIAL-A-STATISTIC* For the latest figures for National Accounts, Balance of Payments, Labour Force, Average Weekly Earnings, Estimated Resident Population and the Consumer Price Index call 1900 986 400 (call cost 77c per minute).

INFORMATION SERVICE

Data which have been published and can be provided within five minutes are free of charge. Our information consultants can also help you to access the full range of ABS information—ABS user-pays services can be tailored to your needs, time frame and budget. Publications may be purchased. Specialists are on hand to help you with analytical or methodological advice.

- PHONE* **1300 135 070**
- EMAIL* **client.services@abs.gov.au**
- FAX* 1300 135 211
- POST* Client Services, ABS, GPO Box 796, Sydney 1041

WHY NOT SUBSCRIBE?

ABS subscription services provide regular, convenient and prompt deliveries of ABS publications and products as they are released. Email delivery of monthly and quarterly publications is available.

- PHONE* 1300 366 323
- EMAIL* subscriptions@abs.gov.au
- FAX* 03 9615 7848
- POST* Subscription Services, ABS, GPO Box 2796Y, Melbourne 3001



2622000009029
ISSN 0819-9914

RRP \$22.00